



1

Weatherization Averages

WX Materials & Labor + V&E + **PROGRAM SUPPORT**

Number of Completions
= Per Unit Average

The bottom right corner of the slide contains a smaller version of the KHC logo, including the text 'KHC Kentucky Housing Corporation' and the tagline 'Investing in quality housing solutions.' The background of the slide is a collage of various residential buildings.

2

State Averages

DOE Formula

Target \$8,497

QTR 1 FY25

\$10,329.86

(45 Completions)

DOE BIL

Target Avg over 5 Years

(\$8,009, \$8,250, 8,497, Yr4, Yr5)

QTR 1 FY25

\$17,061.77

(236 BIL Completions - total)



3

Job Completions

- When a job is completed at the end of the month, it should be billed for that month.
- The billing at the end of the quarter should contain all completions for that quarter. We allow ample time for all subgrantees to finish their billing for job completions occurring at the end of the month.



4

Green Workforce Connect

- [Spotlights: Where You Live – Kentucky - Green Workforce Connect](#)
- Easy access to weatherization jobs around the state
- Gives overview of weatherization in KY
- Breakdown of pay for weatherization



5

Workforce Development Updates

- KWIB Strategic Advance
 - KY is #45 in workforce participation
- Establishing Talent Pipeline
 - Youthbuild Louisville
 - GRID Alternatives
- Option Exploration
 - NCCC Teams
 - Meeting with Interstate Renewable Energy Council



6

Schedule Ideas to Attract Employees

Ideas for recruiting and retention

Work schedules

- Flex
- Four day



7

Flex Schedule

9 days per two-week period at 8.33 hours per day.

Exempt Options:

- 7:00 a.m. – 4:20 p.m.
- 7:30 a.m. – 4:50 p.m.
- 8:00 a.m. – 5:20 p.m.
- 8:30 a.m. – 5:50 p.m.

9 days per two-week period. Maximum 75 Hours

Five-day week (8 hr day)

- 7-4
- 7:30-4:30
- 8-5
- 8:30-5:30

Four-day week (8.75 hr day)

- 7-4:45
- 7:30-5:15
- 8-5:45
- 8:30-6:15

Employees are designated a flex day and adhere to schedule throughout the year.

Make sure workstations are covered throughout agency normal business hours.

Roll flex with supervisor approval for personal reason and/or Holidays.



8

Four Day Work Week

Schedule: 7:00 am-5:30 pm Monday-Thursday (30 min. lunch)

Benefits:

- Three-day weekend
- Time gained on the jobsite (most jobsites are 1-1.5 hours away)

Typical Day:

- Meet up with all crew members at central location
- Arrive at client's home at 8:00 am
- Leave clients home in enough time to be back at meeting place by 5:30

Daily Log:

- Crew members keep a daily log of activities and sign off.
- Crew Leader contacts Weatherization Manager letting them know the arrival time of crew at the jobsite and gives a daily plan.
- At the end of each day, crew members list out completed job duties for the day and daily logs are submitted to the Weatherization Manager.

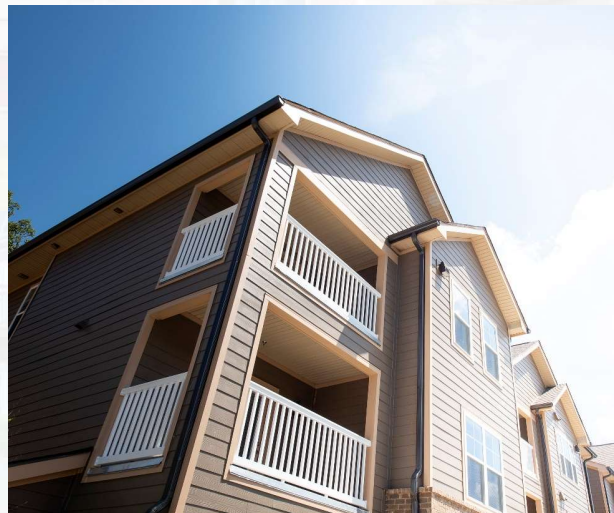
This agency has had no complaints from weatherization clients on this work schedule.



9

Multi-Family

- KHC must approve subgrantees to work on small M-F (no priority lists approved by DOE yet)
- KHC must approve subgrantees to work on large M-F



10

Introduction of John Yi

CEDA



11

SERC



- Rooftop Solar – Big Sandy, KCEOC, LKLP, WKAS
- Triple-pane windows – all subs
- Expected a release of funds prior to the inauguration.



12

BIL Extensions

- History of BIL funding
- DOE obligating the 2nd half of the funding
- Still must meet benchmarks before we can draw on it
- For the moment, a large portion of it will remain as a performance pool so it is there when you need it.



13

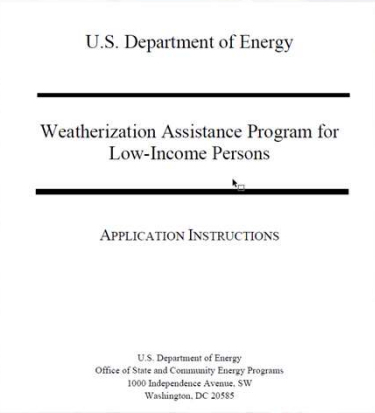
OIG Report

- Kentucky was called out for our ACPU!!!
- OIG will begin monitoring of states!



14

State Plan Discussion



- Anything that needs to be added or changed?
- ACPU increases to \$8,574.
- Can pull out optional categories (i.e. energy audit, intake, etc.).
- BIL ACPU will go to \$8,333.



15

Discussion

ANY QUESTIONS OR COMMENTS?



16