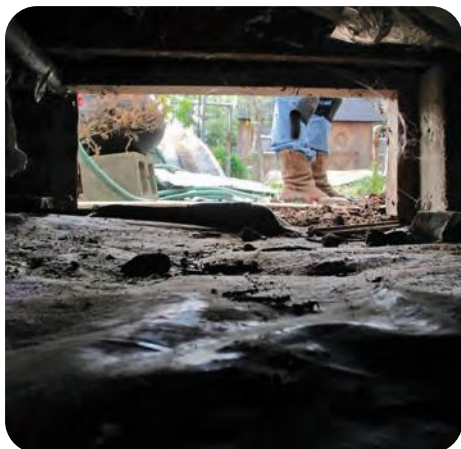
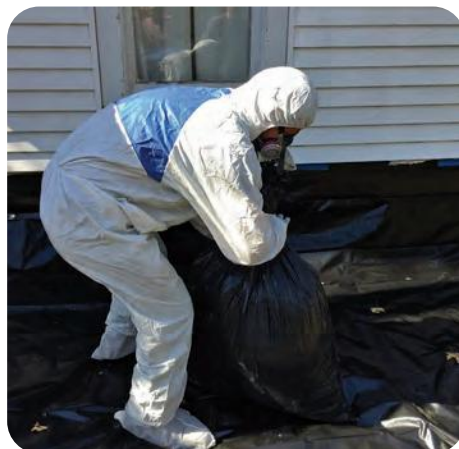


RETROFITTING KENTUCKY

STANDARD WORK SPECIFICATION-ALIGNED FIELD GUIDE



Last updated 19 March 2021
Created by the Energy Smart Academy at Santa Fe Community College
For the Weatherization Collaborative
In alignment with the Standard Work Specifications
Created by the National Renewable Energy Laboratory,
found at <https://sws.nrel.gov>

Licensed with CC BY-NC-SA 4.0;
Attribution-NonCommercial-ShareAlike 4.0 International
<https://creativecommons.org/licenses/by-nc-sa/4.0/>

Contents of SWS-Aligned Field Guide

Pages not numbered consecutively, to encourage printing of individual Job Aids

| Job Aid# | Title of Job Aid SWS Alignment | "Print" Page #s |
|----------|---|--------------------|
| 1-1 | Interior Lead-Safe Weatherization Aligns with Lead-Safe RRP | <u>6-9</u> |
| 1-2 | Exterior Lead-Safe Weatherization Lead-Safe RRP | <u>10-12</u> |
| 2-1 | Air Seal Top Plates in Attic SWS 3.0101.1, 3.0102.11 | <u>13</u> |
| 2-2 | Air Seal an Attic Soffit or Large Opening SWS 3.0101.1, 3.0102.9 | <u>14-16</u> |
| 2-3 | Air Seal an Attic Chase or Small Opening SWS 3.0101.1 | <u>17-18</u> |
| 2-4 | Air Seal Balloon Framing from Attic SWS 3.0101.1, 3.0102.4 | <u>19-20</u> |
| 2-6 | Air Seal Electrical and Other Penetrations in Attic SWS 3.0101.1, 6.0201.1, 6.0201.2 | <u>21</u> |
| 2-7 | Air Seal a Floored Attic SWS 3.0101.1 | <u>22-23</u> |
| 3-1 | Seal Around Chimneys and Flues SWS 3.0102.2 | <u>24-26</u> |
| 3-2 | Seal Around Can Lights (IC and Non-IC Rated) SWS 3.0102.1 | <u>27-29</u> |
| 4-1 | Prepare Attic Floor for Insulation SWS 4.0103.1, 4.0103.2, 4.0103.3, 4.0103.4, 4.0103.5, 4.0103.6, 4.0103.8 | <u>30-32</u> |
| 5-1 | Dam, Seal and Insulate an Attic Hatch SWS 3.0103.1 | <u>33-35</u> |
| 5-2 | Dam, Seal and Insulate a Pull-down Attic Stairway SWS 3.0103.1 | <u>36-37</u> |
| 6-1 | Insulate an Unfloored Attic SWS 4.0103.2, 4.0103.4, 4.0103.6 | <u>38-39</u> |
| 6-2 | Insulate Under a Floored Attic SWS 4.0103.6 | <u>40-42</u> |
| 6-3 | Insulate an Attic Stairway SWS 4.0104.1, 4.0104.2, 4.0104.3, 4.0104.4, 4.0104.5, 4.0104.5, 4.0201.2, 4.0201.3, 4.0202.1 | <u>43-45</u> |
| 7-1 | Prepare a Manufactured Home Ceiling for Insulation SWS 4.0103.6, 4.0103.9, 4.0103.10, 4.0103.11, 4.0103.12 | <u>46-47</u> |
| 7-3 | MH Insulation: Edge Blow Method SWS 4.0103.10 | <u>48-50</u> |
| 7-4 | MH Insulation: Ridge Blow Method SWS 4.0103.11 | <u>51-52</u> |
| 7-5 | MH Insulation: Interior Blow Method SWS 4.0103.12 | <u>53</u> |

| Job Aid# | Title of Job Aid SWS Alignment | "Print" Page #s |
|-----------------|---|--------------------------------|
| 7-6 | MH Insulation: Top Fill Blow Method SWS 4.0103.11 | <u>54-55</u> |
| 8-1 | Air Seal Above the Knee Wall SWS 3.0101.1, 3.0102.11 | <u>56-58</u> |
| 8-2 | Air Seal Beneath the Knee Wall SWS 3.0101.1 | <u>59-60</u> |
| 8-3 | Insulate an Attic Knee Wall with Batts SWS 4.0104.2, 4.0104.3 | <u>61-62</u> |
| 8-4 | Insulate an Attic Knee Wall with 2-Part Spray Foam SWS 4.0104.5, 4.0104.6 | <u>63-64</u> |
| 8-5 | Insulate an Attic Knee Wall with Blown Insulation SWS 4.0104.1 | <u>65-66</u> |
| 9-1 | Dense-Pack a Sidewall via Exterior Blow SWS 4.0202.1 | <u>67-69</u> |
| 9-2 | Dense-Pack a Sidewall via Interior Blow SWS 4.0202.1 | <u>70-72</u> |
| 11-1 | Install Weatherstripping on Exterior Door SWS 3.0202.1 | <u>73-74</u> |
| 11-2 | Install a Door Sweep or Door Bottom on an Exterior Door SWS 3.0202.1 | <u>75-77</u> |
| 12-1 | Air Seal Sill Plate and Rim Joist SWS 3.0104.1 | <u>78-79</u> |
| 12-2 | Insulate Rim Joist SWS 4.0401.1, 4.0401.2, 4.0401.3 | <u>80-82</u> |
| 12-3 | Insulate Basement Walls in Conditioned Space SWS 4.0402.4, 4.0402.5 | <u>83-84</u> |
| 12-4 | Insulate Conditioned Crawlspace Wall SWS 4.0402.2, 4.0402.3 | <u>85-86</u> |
| 13-1 | Air Seal Small Penetrations in a Subfloor SWS 3.0101.1, 3.0104.1 | <u>87-88</u> |
| 13-2 | Air Seal Large Penetrations in a Subfloor SWS 3.0101.1, 3.0104.1 | <u>89-90</u> |
| 13-3 | Air Seal Balloon Framing at Subfloor SWS 3.0101.1, 3.0102.4 | <u>91-92</u> |
| 14-1 | Insulate a Subfloor with Batts Above Unconditioned Space SWS 4.0301.1, 4.0301.6, 4.0302.1 | <u>93-95</u> |
| 14-2 | Insulate a Subfloor with Blown Insulation Above Unconditioned Space SWS 4.0301.2, 4.0301.3, 4.0301.4, 4.0302.2, 4.0302.3 | <u>96-99</u> |
| 15-1 | Insulate a Manufactured Home Belly SWS 4.0302.1, 4.0302.9, (3.0102.5, 3.0102.6, 3.0102.7) | <u>100-102</u> |
| 16-1 | Install a Crawlspace Vapor Retarder SWS 2.0202.1, 2.0202.2, 2.0202.3, (3.0104.1) | <u>103-105</u> |
| 16-2 | Repair an Existing Vapor Retarder SWS 2.0202.1, 2.0202.2, 2.0202.3, (3.0104.1) | <u>106-107</u> |

| Job Aid# | Title of Job Aid SWS Alignment | “Print” Page #s |
|-----------------|--|--------------------------------|
| 17-1 | Vent a Clothes Dryer SWS 6.0101.1, 6.0101.2, 6.0202.1 | <u>108-110</u> |
| 18-2 | Install a Hard-Ducted Exhaust Vent SWS 6.0101.1, 6.0101.2, 6.0201.1, 6.0201.2 | <u>111-113</u> |
| 19-1 | Seal Ducts with Mastic SWS 5.0106.1, 6.0101.2, 6.0101.3, (5.0105.1, 5.0105.2, 5.0105.3) | <u>114-119</u> |
| 20-1 | Insulate Hard Pipe Ducts SWS 5.0107.1, 5.0107.2, (6.0202.1) | <u>120-121</u> |
| 20-2 | Insulate Flex Ducts SWS 5.0107.1, 5.0105.2 | <u>122-123</u> |
| 20-3 | Insulate Supply Boots SWS 5.0107.1 | <u>124-125</u> |
| 20-4 | Insulate Plenum SWS 5.0107.1 | <u>126-129</u> |
| 21-1 | Window Installation SWS 3.0201.9 | <u>130-132</u> |
| 21-2 | Door Installation SWS 3.0202.2 | <u>133-135</u> |
| 22-1 | Window Glass Replacement SWS 3.0201.1, 3.0201.4 | <u>136-138</u> |
| 23-1 | Insulate an Electric Domestic Water Heater SWS 7.0301.2 | <u>139-140</u> |
| 23-2 | Insulate a Gas Domestic Water Heater SWS 7.0301.2, 7.0302.2 | <u>141-143</u> |
| 23-3 | Insulate Domestic Hot Water (DHW) Pipes SWS 7.0301.1 | <u>144-145</u> |
| 24-1 | Install a Low-Flow Showerhead SWS 7.0201.1 | <u>146-148</u> |
| 24-2 | Install a Low-Flow Faucet Aerator SWS 7.0201.1 | <u>149-151</u> |
| 25-1 | Install a Roof Vent SWS 6.0101.2, 6.0201.1, 6.0201.2, 4.0188.2 | <u>152-154</u> |
| 25-2 | Locate an Exterior Termination SWS 6.0101.2 | <u>155</u> |

Appendix: Index of Standard Work Specifications Referenced in Field Guide [156-157](#)

1-1 INTERIOR LEAD-SAFE WEATHERIZATION

Aligns with Lead RRP



BEFORE

- ✗ Homes built before 1978 have the potential for lead paint and require special considerations during retrofitting



AFTER

- ✓ No lead dust or debris remains inside the home
- ✓ Contaminated materials have been disposed of or cleaned properly
- ✓ Disposal containment is securely closed

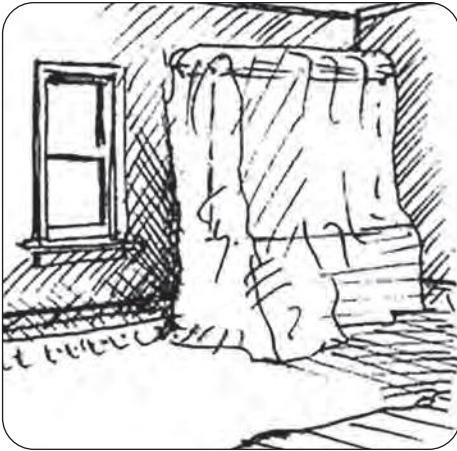
TOOLS

- Zip Walls
- HEPA Vacuum
- Hand Tools or Shrouded Power Tools
- Half or Full-face Respirator (Fit-Tested)

MATERIALS

- 6-Mil Plastic Sheeting
- Signage
- Tack Pads
- Painters Tape
- Trash Bags
- Disposable Tyvek Suits
- Booties
- Nitrile Gloves
- P-100 Filters

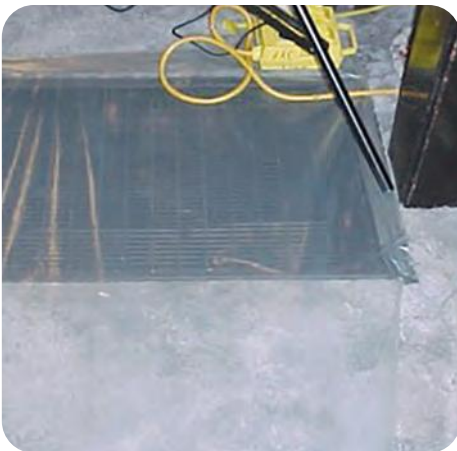
1-1 INTERIOR LEAD-SAFE WEATHERIZATION



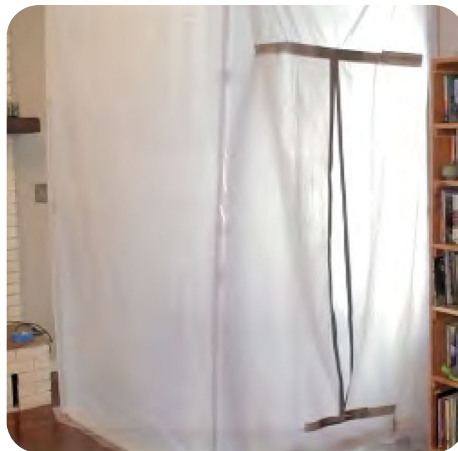
1. Move furniture out of work area and, if it cannot be removed, securely cover horizontal with plastic sheeting



2. Use disposable physical barriers to mark out and contain work area dust and debris



3. Six feet in any direction from the work area, cover surfaces with plastic sheeting, taped in place, including HVAC access points



4. Block off access doorways and install zippers to contain debris in work area

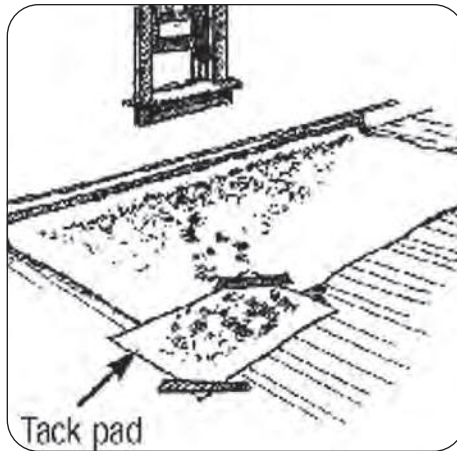
NOTES

Half and Full-face respirators, required for Lead Renovation work, must be fit-tested on all workers at least once a year. The respirator must form a tight seal at the face and neck. Workers who have a beard cannot wear a half- or full-face respirator, since they will not form a tight seal and contaminants can bypass the respirator. Bearded workers need to wear a PAPR, or powered air-purifying respirator.

1-1 INTERIOR LEAD-SAFE WEATHERIZATION

CAUTION

**RENOVATION WORK
DO NOT ENTER WORK AREA
UNLESS AUTHORIZED
NO SMOKING, EATING, OR
DRINKING**



5. Post signs outside work area to prevent anyone from entering work area unintentionally

6. Use tack pads at access points to containment area to minimize dust and debris being tracked outside area



7. Wear appropriate PPE, including Tyvek suit, gloves and P-100 HEPA Disposable or Fit-Tested Respirator



8. Utilize hand tools and/or shrouded tools that minimize dispersion of dust and debris

NOTES

1-1 INTERIOR LEAD-SAFE WEATHERIZATION



9. Wipe down surfaces and vacuum work area, taking special care and attention of cracks and crevices where dust and debris might collect

10. Carefully roll up and dispose of any plastic sheeting or other disposable materials in the work area



11. Doff PPE outside, avoiding contact with contaminated surfaces of suit, gloves, etc., and dispose immediately

NOTES

1-2 EXTERIOR LEAD-SAFE WEATHERIZATION

Aligns with Lead RRP



BEFORE

- ✗ Homes built before 1978 have the potential for lead paint and require special considerations during retrofitting



AFTER

- ✓ Detailed attention needs to be paid to every aspect of work with lead-based paint, from start to finish

TOOLS

- HEPA Vacuum
- Hand Tools or Shrouded Power Tools
- Half or Full-face Respirator (Fit-Tested)

MATERIALS

- 6-Mil Plastic Sheeting
- Catchment Poly Bags
- Signage
- Tack Pads
- Painters Tape
- Trash Bags
- Scaffolding
- Disposable Tyvek Suits
- Booties
- Nitrile Gloves
- P-100 Filters

1-2 EXTERIOR LEAD-SAFE WEATHERIZATION



1. Create containment area with plastic sheeting 10 feet in any direction from work area



2. Post signs at least 20 feet from work area to prevent anyone from entering work area unintentionally



3. Seal off all exterior access points to home within containment area, including windows, doors, mail slots and vents



4. Where houses are located close together, vertical containment will be necessary

NOTES

Half and Full-face respirators, required for Lead Renovation work, must be fit-tested on all workers at least once a year. The respirator must form a tight seal at the face and neck. Workers who have a beard cannot wear a half- or full-face respirator, since they will not form a tight seal and contaminants can bypass the respirator. Bearded workers need to wear a PAPR, or powered air-purifying respirator.

1-2 EXTERIOR LEAD-SAFE WEATHERIZATION



- 5.** Tape plastic up onto work surface and utilize systems to catch debris while limiting damage to exterior plantings



- 6.** Don proper PPE, including tyvek suit with hood, gloves, booties and half- or full-face respirator (see notes). Be aware of potential for thermal stress when working in full PPE



- 7.** Use hand tools or shrouded power tools to limit dispersal of contaminated dust and debris



- 8.** Clean work area and carefully fold and dispose of plastic sheeting



- 9.** Doff PPE outside, avoiding contact with contaminated surfaces of suit, gloves, etc., and dispose immediately

NOTES

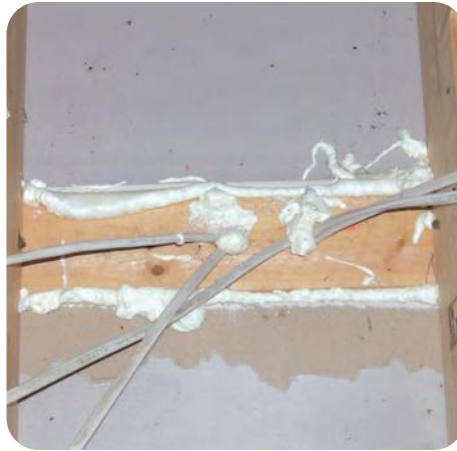
2-1 AIR SEAL TOP PLATES IN ATTIC

Aligns with SWS [3.0101.1](#), [3.0102.11](#)



BEFORE

✗ Air can move around unsealed top plates in attic, making new insulation less effective



AFTER

✓ Seal perimeter at all gaps and extend sealant up onto adjacent materials

TOOLS

- Caulk Gun
- Spray Foam Dispensing Gun

MATERIALS

- Caulk
- 1-part Polyurethane Spray Foam
- Mastic



Apply caulk to areas with gap 1/4 inch or smaller



Apply sprayfoam or mastic to gaps 1/4 inch to 2 inches wide

NOTES

2-2 AIR SEAL AN ATTIC SOFFIT OR LARGE OPENING

Aligns with SWS [3.0101.1](#), [3.0102.9](#)



OPTION A SEAL SOFFIT INTO CONDITIONED SPACE

Soffits, coffered ceilings and other design details can create lower sections in the ceiling line and often are not sealed or insulated properly



OPTION B SEAL SOFFIT OUT OF CONDITIONED SPACE

From the attic side, it is best to determine if it's better to leave the soffit connected to the conditioned space (inside the house) or seal it off as part of the unconditioned space

TOOLS

- Caulk Gun
- Utility Knife
- Measuring Tape
- Drill
- Spray Foam Nozzle

MATERIALS

- Spray Foam
- Lumber for Support
- Expanded Polystyrene (EPS)
- Extruded Polystyrene (XPS)
- Gypsum Board
- Plywood
- Caulk
- Mechanical Fasteners

2-2 AIR SEAL AN ATTIC SOFFIT OR LARGE OPENING

OPTION A - SEAL SOFFIT INTO CONDITIONED SPACE



A-1. For openings larger than 24 inches, support braces will be necessary



A-2. Attach bracing across joists securely, spacing no more than 24 inches apart



A-3. Apply sealant along top plates, bracing, and framing members adjacent to opening more than 24 inches apart



A-4. Place Infill material over opening and secure in place with mechanical fasteners



A-5. When support bracing has been used, screw infill material to bracing as well

NOTES

2-2 AIR SEAL AN ATTIC SOFFIT OR LARGE OPENING

OPTION B - SEAL SOFFIT OUT OF CONDITIONED SPACE



B-1. Seal off framed openings with rigid material, such as gypsum board, XPS, EPS, or OSB



B-2. Seal around infill materials

NOTES

2-3 AIR SEAL AN ATTIC CHASE OR SMALL OPENING

Aligns with SWS 3.0101.1



BEFORE

✗ Open chases for electrical and plumbing allow air movement from subspace and/or conditioned space



AFTER

✓ When properly sealed, air movement will cease through these spaces

TOOLS

- Measuring Tape
- Drill
- Utility Knife
- Caulk Gun
- Spray Foam Gun

MATERIALS

- Extruded Polystyrene (XPS)
- Expanded Polystyrene (EPS)
- Gypsum Board
- Plywood
- Spray Foam
- Mechanical Fasteners

2-3 AIR SEAL AN ATTIC CHASE OR SMALL OPENING



1. Measure the opening of the chase in a location that will maintain the pressure plane



2. Cut material to fit for each space where it is needed, paying attention to locations of wires and pipes



3. Rigid material to cover the span can be XPS, EPS, gypsum board or plywood, as appropriate for the location



4. Seal rigid material into place securely and air seal with caulk, spray foam or mastic



5. Extend sealing to adjacent materials to ensure a complete air seal

NOTES

2-4 AIR SEAL BALLOON FRAMING FROM ATTIC

Aligns with SWS 3.0101.1, 3.0102.4



BEFORE

- ✗ Balloon framing leaves cavities open from the basement to the attic, allowing for large amounts of air movement



AFTER

- ✓ By sealing at the top of the cavity, air flow is stopped and the cavity below is another step closer to being ready to insulate

TOOLS

- Measuring Tape
- Drill
- Utility Knife
- Saw
- Sprayfoam Gun
- Caulk Gun

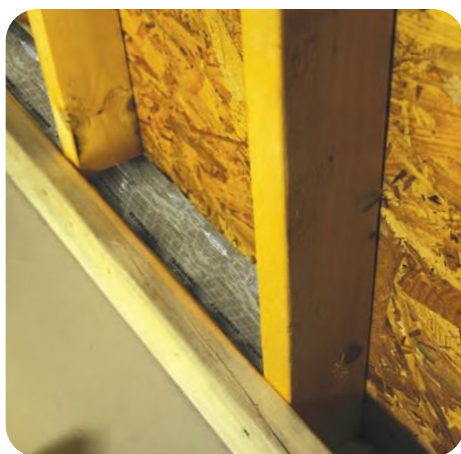
MATERIALS

- Extruded Polystyrene (XPS)
- Gypsum Board
- Plywood
- Plastic-wrapped/ Bagged Fiberglass Batts
- 1-part Sprayfoam
- Caulk
- Mastic
- Mechanical Fasteners

2-4 AIR SEAL BALLOON FRAMING FROM ATTIC



- 1.** Block the opening of balloon framed sidewalls in alignment with the pressure boundary



- 2.** Blocking material options include lumber, gypsum board, XPS, or bagged fiberglass batts



- 3.** Blocking material needs to be appropriate for potential weight load



- 4.** And securely fastened rigid material to withstand pressure of dense-packing beneath



- 5.** Seal any remaining gaps with caulk or 1-part spray foam, extending sealing to adjacent materials

NOTES

2-6 SEAL ELECTRICAL AND OTHER PENETRATIONS IN ATTIC

Aligns with SWS [3.0101.1](#), [6.0201.1](#), [6.0201.2](#)



1. Electrical, plumbing and HVAC penetrations are often oversized



2. For smaller gaps, caulk is enough to seal the hole



3. Holes larger than 1/4 inch may require support for the sealant



4. Inserting backer rod provides infill to support the sealant



5. Seal to cover entire opening, including all backer rod

TOOLS

- Caulk Gun
- Spray Foam Gun
- Utility Knife

NOTES

For gaps larger than 3 inches, see [2-3 Air Seal an Attic Chase or Small Opening](#)

MATERIALS

- Caulk
- Spray Foam
- Backer Rod

2-7 AIR SEAL A FLOORED ATTIC

Aligns with SWS 3.0101.1



BEFORE

- ✗ Check floor joist cavities for blocking material and penetrations



AFTER

- ✓ Air seal cracks and penetrations in floored attic spaces

TOOLS

- Saw
- Drill
- Measuring Tape
- Utility Knife
- Caulk Gun
- Spray Foam Gun

MATERIALS

- Caulk
- Extruded Polystyrene (XPS)
- Lumber
- Gypsum Board
- 1-part Spray Foam
- Mechanical Fasteners
- Backer Rod

NOTES

Spray foam will not be used in spaces that will be exposed to habitable living spaces.

2-7 AIR SEAL A FLOORED ATTIC



1. With property owner permission, remove flooring material to access cavities



2. Remove only as much flooring as necessary to gain access to every cavity and any large air sealing areas



3. Place blocking material, as needed, and air seal to hold insulation in place



4. In rare cases it may be easier to access to locate blocks from below floored attic spaces



5. Air seal gaps and seams in joist cavities as accessible



6. Check for and air seal electrical, plumbing, and HVAC penetrations properly

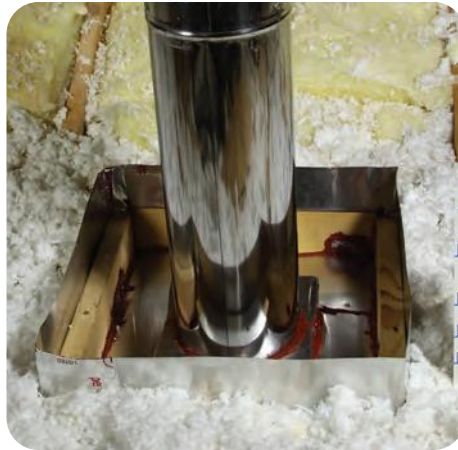
3-1 SEAL AROUND CHIMNEYS AND FLUES

Aligns with SWS 3.0102.2



BEFORE

- ✗ Even high-temperature sites need air sealing



AFTER

- ✓ Maintain 3-inch clearance from flue for all combustible materials

TOOLS

- Caulk Gun
- Metal Snips or Nibbler
- Drill
- Tape Measure

MATERIALS

- 26-Gauge Sheet Metal
- Mechanical Fasteners
- Lumber

3-1 SEAL AROUND CHIMNEYS AND FLUES



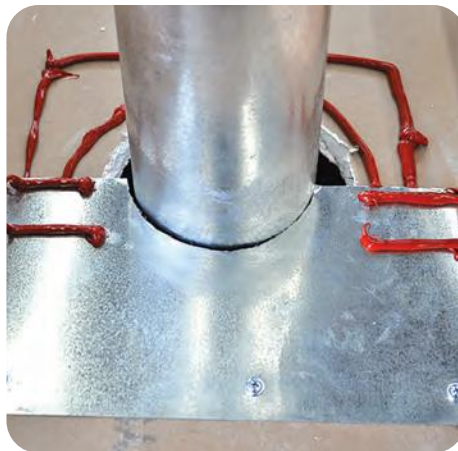
- 1.** Select high-temperature caulk sealant that will adjust to temperature differences between materials



- 2.** Apply unbroken ring of caulk directly to clean decking around entire perimeter of flue or chimney



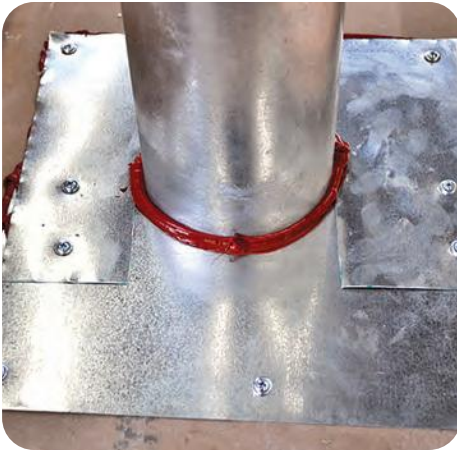
- 3.** Apply unbroken ring of caulk directly to clean decking to match perimeter of sheet metal backing



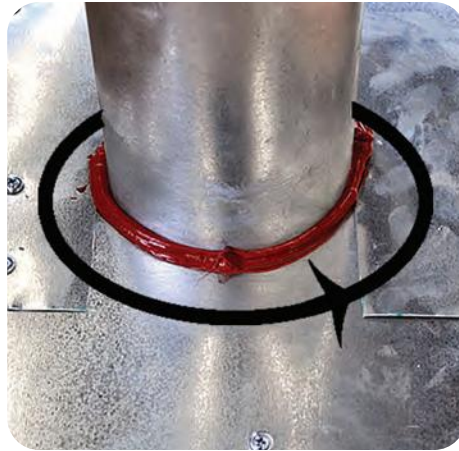
- 4.** Install first layer of metal sheeting and apply additional caulk to complete new perimeter for second layer of sheeting

NOTES

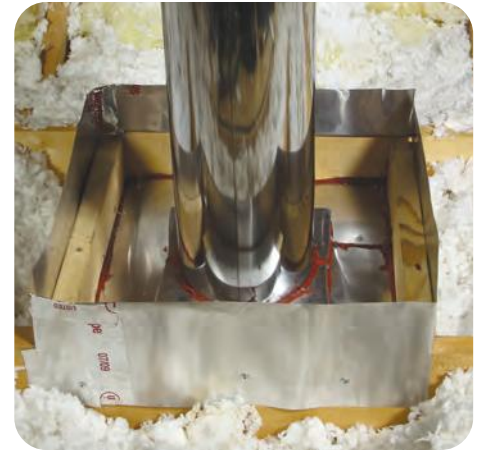
3-1 SEAL AROUND CHIMNEYS AND FLUES



5. Set second layer of sheeting to complete ring around flue or chimney. Fasten sheeting mechanically



6. Run bead of high-temperature caulk around flue at backing to seal remaining gaps $< 1/4$ inch



7. Create a durable, fixed dam, at least 2 inches higher than final insulation level, keeping all combustible materials at least 3 inches away from flue or chimney

NOTES

3-2 SEAL AROUND CAN LIGHTS (IC AND NON-IC RATED)

Aligns with SWS 3.0102.1



BEFORE

- ✗ Non-Insulation
Contact-rated can lights create a fire hazard in well-insulated attics
- ✗ IC-rated can lights are difficult best sealed with a box around them



AFTER

- ✓ When boxed with appropriate clearances and fire-rated materials, fire risk is mitigated

TOOLS

- Measuring Tape
- Utility Knife
- Caulk Gun

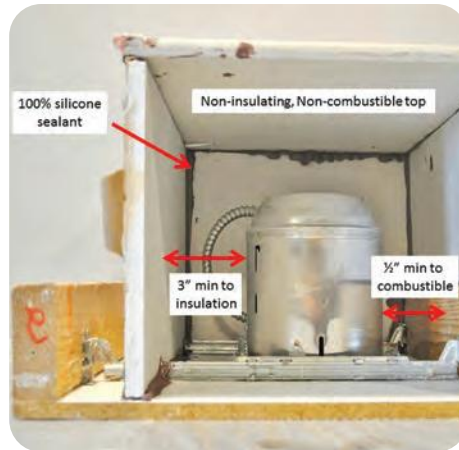
MATERIALS

- 5/8 Inch Gypsum Board
- High-Temperature Caulk
- 100% Silicone Sealant

3-2 SEAL AROUND CAN LIGHTS (IC AND NON-IC RATED)



1. Clear any debris from around can light



2. Enclosure has 3 inches of clearance from lamp to insulation on all sides, at least 1/2 inch from any combustible material, such as wood



3. Premade boxes can make installation easier when installation site is clear of framing members

NOTES

Non "Insulation Contact" Can Lights are designed to vent heat from the lamp into the cavity around them. They are safe to use in non-insulated cavities, such as the ceiling/floors between different stories in a home. IC-rated Can Lights have a secondary housing to keep the heat of the lamp from contacting the insulation. They are also recommended for use with lower wattage lamps.

3-2 SEAL AROUND CAN LIGHTS (IC AND NON-IC RATED)



- 4.** Seal box on all sides and edges to make continuous barrier from attic, using high temp caulk where appropriate



- 5.** Top of box must be R-1 or less and left free of insulation. Flag enclosure for added visibility

NOTES

With the help of a licensed electrician, there is also the option of replacing old can lights with air-tight units or LED retrofit inserts. Check program requirements.

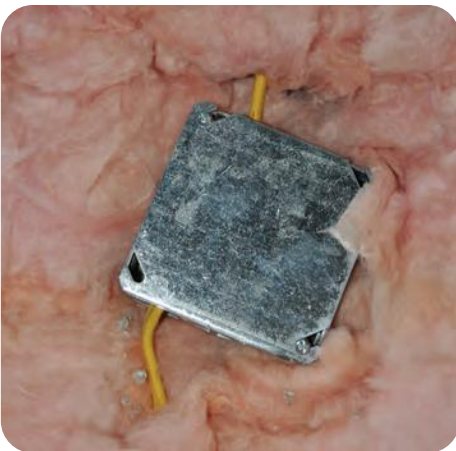
4-1 PREPARE ATTIC FLOOR FOR INSULATION

Aligns with SWS 4.0103.1, 4.0103.2, 4.0103.3, 4.0103.4, 4.0103.5, 4.0103.6, and 4.0103.8

BEFORE YOU BEGIN



- ✓ Verify that knob & tube wiring is not live before proceeding. If live wiring is identified, it must be replaced with modern wiring before proceeding.



- ✓ Cover junction boxes and attach flag for visibility

TOOLS

- Non-Contact Tester
- Utility Knife
- Drill
- Hole Saw
- Caulk Gun
- Staple Gun
- Metal Snips
- Nibbler

4-1 PREPARE ATTIC FLOOR FOR INSULATION



1. Remove stored materials



2. Run exhaust fan ducts to outside, insulate to R-8



3. Ensure air sealing, if any, is completed



4. Install baffles, if needed. Ensure 2 inches of gap for airflow

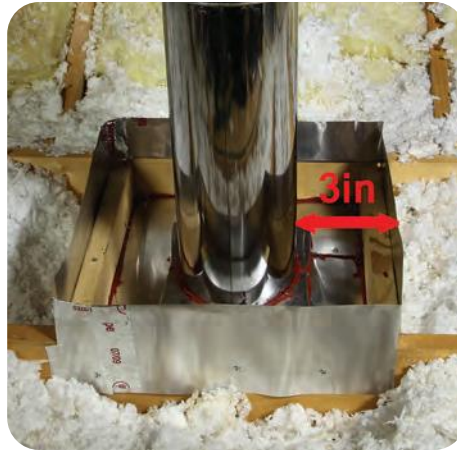
MATERIALS

- Plywood
- Drywall
- XPS
- Junction Box Covers
- Flags
- Vent Caps
- Rigid Duct
- Mechanical Fasteners
- Foil Tape
- R-8 Duct Insulation
- Soffit Baffles
- Depth Rulers
- 26-Gauge Steel Sheeting
- High-Temperature Caulk

4-1 PREPARE ATTIC FLOOR FOR INSULATION



- 5.** Depth rulers installed,
1 per 300 square feet



- 6.** All dams are built,
as needed

NOTES

Knob-and-tube can
be replaced by a duly
qualified professional.

5-1 DAM, SEAL & INSULATE AN ATTIC HATCH

Aligns with SWS 3.0103.1



BEFORE

✗ Uninsulated attic access points allow conditioned air to escape the home in all seasons



AFTER

✓ Safely and durably sealing and insulating attic access doors prevent air movement and reduces heating and cooling loads

TOOLS

- Measuring Tape
- Saw
- Drill
- T-Square
- Utility Knife
- Caulk Gun

MATERIALS

- Lumber
- Mechanical Fasteners
- Extruded Polystyrene (XPS) or Other Rigid Foam Insulation Board
- Foam Tape
- Adhesive
- Latch (optional)

5-1 DAM, SEAL & INSULATE AN ATTIC HATCH



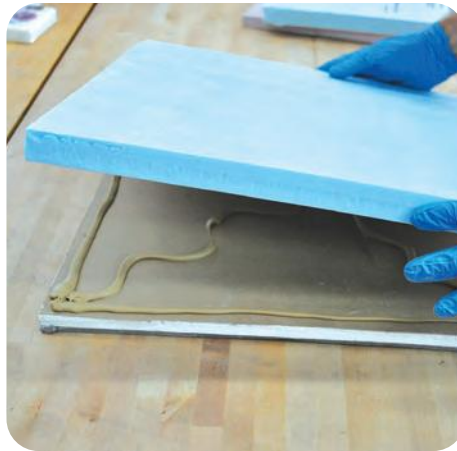
1. Rigid, durable attic hatch blocking/dam is installed in a permanent way



2. Dam is at least 2 inches taller than the final attic insulation depth



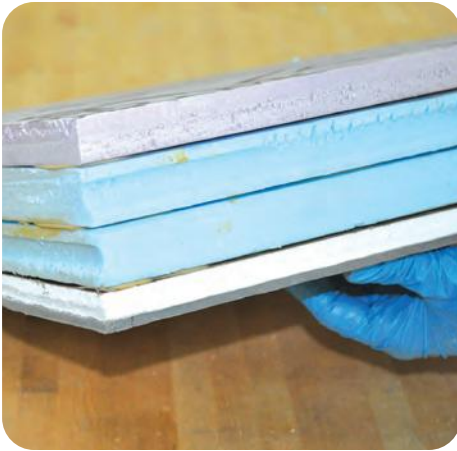
3. Cut gypsum board to hatch size for "friction fit" and air seal bottom of hatch with unbroken ring of foam tape



4. Cut and stack rigid foam insulation, gluing with appropriate adhesive, to build up R-value

NOTES

5-1 DAM, SEAL & INSULATE AN ATTIC HATCH



5. Hatch is insulated to proper R-value (the maximum R-value structurally allowable, up to the final insulation level of surrounding attic)



6. Trim is air-sealed with appropriate material



7. For vertical accesses, run weatherstripping or foam tape to air seal at these doorways too. Hold vertical accesses closed with latch if necessary

NOTES

5-2 DAM, SEAL & INSULATE A PULL-DOWN ATTIC STAIRWAY

Aligns with SWS 3.0103.1



BEFORE

✗ Pull-down stairs can be a weak point in thermal/pressure boundaries, as well as creating a place where insulation can fall down into the home



AFTER

✓ Attic pull-down stairs are safely and durably sealed and insulated to prevent air movement

MATERIALS

- Extruded Polystyrene (XPS)
- Expanded Polystyrene (EPS)
- Polyiso
- Plywood
- 1-Part Spray Foam
- Spray Adhesive
- Caulk Adhesive
- Foil Tape
- Mechanical Fasteners
- Foam Tape
- Weatherstripping
- Latches

TOOLS

- | | |
|------------------|------------------|
| • Measuring Tape | • Spray Foam Gun |
| • Utility Knife | • Drill |
| • Saw | |
| • Caulk Gun | |

5-2 DAM, SEAL & INSULATE A PULL-DOWN ATTIC STAIRWAY



- 1.** Build cover above and around pull-down stair, taller than final insulation height



- 2.** Insulate top and sides of dam cover, to appropriate R-value



- 3.** Air seal all edges of trim



- 4.** Air seal with foam tape or weatherstripping



- 5.** Install latches to ensure hatch remains closed and air sealed if it does not remain closed with a 'friction fit'

NOTES

6-1 INSULATE AN UNFLOORED ATTIC

Aligns with SWS 4.0103.2, 4.0103.4, 4.0103.6



BEFORE

Ensure that attic prep work has been completed before starting installation (See 4-1 Prep Attic Floor for Insulation)



AFTER

FINAL CHECKLIST

- ✓ Appropriate insulation material used
- ✓ Correct depth, as specified in work order
- ✓ Insulation level is even

TOOLS

- Measuring Tape
- Insulation Machine
- Staple Gun

MATERIALS

- Loose fill fiberglass or cellulose (as per work order)
- Staples

6-1 INSULATE AN UNFLOORED ATTIC

| Description / Comment | |
|---|--|
| Attic Insulation - Blown Fiberglass - R-38 | |
| Attic Insulation - Blown Fiberglass - R-38 | |

R13 to R60

Nature Blend™ Loose Fill Formula

Coverage Chart for Thermal Acoustical Application

| R-Value @ 10" T | Initial Density (lb/cu ft) | Minimum Density (lb/cu ft) | No. Joints (per square per armament) | | | 2" x 8", 10" O.C. | | |
|-----------------|----------------------------|----------------------------|--------------------------------------|--------------------------------|----------------------------|------------------------|--------------------------------|----------------------------|
| | | | Single Per 100 Sq. Ft. | Joint Coverage Sq. Ft. Per Sq. | Minimum Weight Per Sq. Ft. | Single Per 100 Sq. Ft. | Joint Coverage Sq. Ft. Per Sq. | Minimum Weight Per Sq. Ft. |
| 13 | 4.4 | 4.0 | 17.4 | 57.5 | 0.38 | 15.8 | 63.5 | 0.35 |
| 19 | 5.1 | 5.5 | 27.9 | 35.8 | 0.61 | 25.3 | 39.6 | 0.56 |
| 22 | 5.9 | 6.2 | 33.2 | 30.1 | 0.73 | 30.5 | 32.8 | 0.67 |
| 25 | 7.8 | 7.0 | 38.6 | 25.9 | 0.85 | 35.8 | 28.0 | 0.79 |
| 30 | 9.2 | 8.3 | 47.6 | 21.9 | 1.00 | 44.6 | 22.4 | 0.98 |
| 35 | 11.4 | 10.3 | 62.0 | 16.1 | 1.26 | 58.9 | 17.0 | 1.30 |
| 48 | 14.6 | 13.1 | 82.0 | 12.2 | 1.80 | 76.7 | 12.7 | 1.73 |
| 60 | 17.7 | 15.9 | 101.9 | 9.8 | 2.24 | 96.6 | 10.1 | 2.17 |



1. Verify against work order that correct insulation material is being installed
2. Verify insulation depth/density against manufacturer's density chart
3. While installing, regularly check depth of insulation for even coverage and to meet required depth



4. Ensure that insulation does not get into dammed-off areas, such as around chimneys and flues and inside soffit baffles
5. When complete, post insulation certificate by attic entrance

NOTES

6-2 INSULATE UNDER A FLOORED ATTIC

Aligns with SWS 4.0103.6



BEFORE

- ✗ Attics with flooring often hide uninsulated cavities



AFTER

- ✓ An insulated attic floor provides a continuous, contiguous, safe, and compliant thermal boundary that prevents air movement

TOOLS

- Measuring Tape
- Utility Knife
- Insulation Machine
- Drill
- Hole Saw
- Prybar
- Caulk Gun

MATERIALS

- Loose Fiberglass or Cellulose Insulation
- Extruded Polystyrene (XPS)
- Caulk
- Mechanical Fasteners
- Gypsum Board
- Plugs

6-2 INSULATE UNDER A FLOORED ATTIC



1. Ensure that floor cavities are blocked securely at both ends



2. If boards can be loosened, pry up as few boards as possible to access all cavities. If flooring is in solid sheets, access holes may need to be drilled



3. Fill entire cavity with insulation to prescribed density



4. Occasionally a homeowner may not want the attic floor to be disturbed. The cavities can also be accessed from below through the ceiling, particularly in garage spaces

NOTES

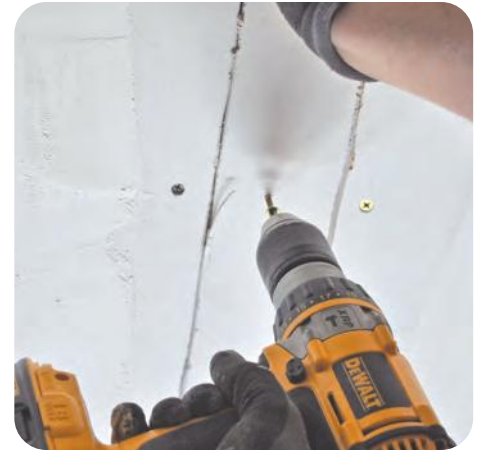
6-2 INSULATE UNDER A FLOORED ATTIC



- 5.** Blocking still needs to be put into place



- 6.** Blow insulation to completely fill cavities to prescribed density



- 7.** Fill and reseal access holes to prevent air movement

NOTES

6-3 INSULATE AN ATTIC STAIRWAY

Aligns with SWS [4.0104.1](#), [4.0104.2](#), [4.0104.3](#), [4.0104.4](#),
[4.0104.5](#), [4.0104.6](#), [4.0201.2](#), [4.0201.3](#), [4.0202.1](#)



BEFORE

X Attic stairways can offer a unique set of insulation challenges. Clearly define where the thermal and pressure boundary are going to be located before starting insulation



AFTER

✓ Insulation provides a continuous, contiguous, safe, and compliant thermal boundary that prevents air movement between the attic and the remainder of the home

TOOLS

- | | |
|-------------------------|-----------------------------|
| • <u>Measuring Tape</u> | • <u>Insulation Machine</u> |
| • <u>Drill</u> | • <u>Spray Foam Gun</u> |
| • <u>Utility Knife</u> | |
| • <u>Hole Saw</u> | |

MATERIALS

- Kraft-Faced Fiberglass Batts
- Loose Cellulose or Fiberglass Insulation
- Netting
- Furring Strips
- Staples
- Mechanical Fasteners
- Extruded Polystyrene (XPS)
- 2-Part Spray Foam
- 1-Part Spray Foam
- Plywood
- Gypsum Board
- House Wrap

6-3 INSULATE AN ATTIC STAIRWAY



- 1.** If walls are accessible from the attic side, choose between batt or blown-in insulation



- 2.** Block off open cavities along the line of the thermal/pressure boundary



- 3.** Air seal around blocking material



- 4.** Cut batts to size for each individual cavity, ensuring no gaps remain, locating kraft-paper toward conditioned space



- 5.** For batt insulation, cover installed batts with backing. For blown-in, attach netting to framing members, cut holes in netting and blow in insulation to 3.5 pounds per cubic inch

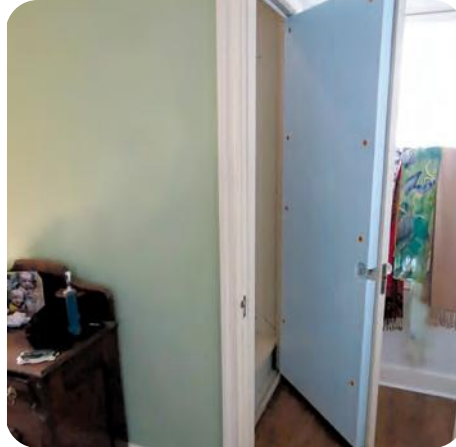


- 6.** If walls are enclosed from attic side, drill holes in stairways walls

6-3 INSULATE AN ATTIC STAIRWAY



7. Dense pack stairway walls



8. Weatherstrip and insulate door



9. Insulate under stairway using insulation indicated by work order



10. Seal off insulation from conditioned space in home



11. If backside of stairs is sealed, blow insulation into cavity behind stairs



12. Plug access holes from blown insulation

NOTES

7-1 PREPARE A MANUFACTURED HOME CEILING FOR INSULATION

Aligns with SWS [4.0103.6](#), [4.0103.9](#), [4.0103.10](#), [4.0103.11](#), [4.0103.12](#)



BEFORE YOU BEGIN

Make any repairs and preparation as noted from assessment, as well as fixing any new issues that could cause the ceiling to be compromised with the additional weight of insulation



AFTER

FINAL CHECKLIST

- ✓ Vents all terminate to outside and are properly sealed
- ✓ Flues are dammed properly
- ✓ Ceiling is in good condition to hold weight

TOOLS

- Measuring Tape
- Utility Knife
- Zip Tie Tensioner

MATERIALS

- R-8 minimum Flex Duct insulation
- Duct Insulation with Vapor Retarder
- Water Heater Blanket with Vapor Retarder
- Zip Ties
- Twine
- Spray Adhesive
- Mastic
- UL 181 Fiberglass Mesh Tape

7-1 PREPARE A MANUFACTURED HOME CEILING FOR INSULATION



1. Ensure plumbing and exhaust vents terminate outside



2. Dam around high temperature flues (note: flue in image is in need of work)



3. Replace non-IC rated can lights with IC-rated cans



4. Repair roof leaks or other damage, as possible, or defer job if necessary

NOTES

Check with your state
program to find out
deferral thresholds
and procedures

7-3 MH INSULATION: EDGE BLOW METHOD

Aligns with SWS 4.0103.10



BEFORE

- ✗ Manufactured housing often does not meet regional standards for insulation



AFTER

- ✓ Verify reinstallation and proper sealing of edge of roof to ensure no water or pest intrusion

NOTES

TOOLS

- Drill
- Utility Knife
- Insulation Machine

MATERIALS

- Fiberglass or Cellulose Loose Insulation
- Blocking Material
- Butyl Tape

7-3 MH INSULATION: EDGE BLOW METHOD



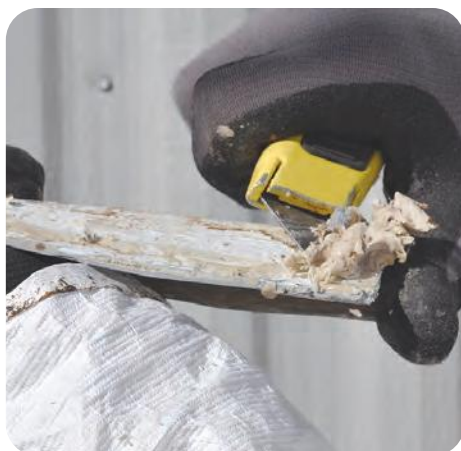
1. Verify integrity of ceiling to hold weight of insulation



2. Prepare stable work area to access roof edge



3. Unfasten and remove J channel from edge of roof



4. Clean old butyl tape or putty from J channel and store J channel somewhere safe until it can be reinstalled



5. Remove staples holding down edge of roof



6. Insert blocks to hold roof edge up approximately 6 inches

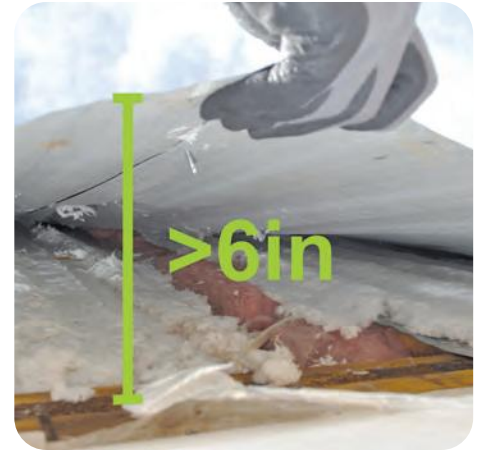
7-3 MH INSULATION: EDGE BLOW METHOD



- 7.** Ground the fill hose to reduce chance of electrical build-up



- 8.** Insert blower hose as far as possible into cavity and retract slowly while filling space between trusses



- 9.** Work down the edge of the roof until entire cavity is full



- 10.** Remove blocks and reattach edge of roofing over exterior sidewall paneling



- 11.** Replace butyl tape on J channel



- 12.** Reattach J channel, lapping over edge of roof. Repeat entire process for other side, if necessary

7-4 MH INSULATION: RIDGE BLOW METHOD

Aligns with SWS 4.0103.11



BEFORE

✗ Manufactured housing commonly is underinsulated, particularly older models



AFTER

✓ After accessing from ridge, ridge cap can be installed or a series of vent caps

TOOLS

- Drill
- Saw
- Insulation Machine
- Caulk Gun
- Metal Sheers

MATERIALS

- Loose Fiberglass Insulation
- Sealant
- 26-Gauge Metal Sheeting
- Vent Caps
- Mechanical Fasteners
- Elastomeric Coating

7-4 MH INSULATION: RIDGE BLOW METHOD



1. Remove ridge cap or cut access holes at ridge, leaving one side attached to put back in place



2. Insert blower hose



3. Fill all accessible areas



4. If not installing ridge or cap vents, replace flaps, patch over with metal, and seal with elastomeric

NOTES

7-5 MH INSULATION: INTERIOR BLOW METHOD

Aligns with SWS [4.0103.12](#)



1. Drill holes in ceiling to fill each ceiling joist cavity



2. Blow insulation into ceiling cavity to appropriate R-value for region



3. Continue throughout house to ensure even coverage and no gaps



4. Seal all holes securely

TOOLS

- Hole Saw
- Vacuum
- Insulation Machine
- Caulk Gun

MATERIALS

- Cellulose or Fiberglass Loose Insulation
- Plugs
- Sealant

NOTES

7-6 MH INSULATION: TOP FILL BLOW METHOD

Aligns with SWS 4.0103.11



BEFORE

X Attics in older manufactured housing are often underinsulated or poorly insulated



AFTER

FINAL CHECKLIST

- ✓ Provide a Continuous and safe thermal barrier
- ✓ Protect integrity of roof

TOOLS

- Saw
- Insulation Machine
- Caulk Gun
- Paint Brush
- Drill

MATERIALS

- Cellulose or Fiberglass Loose Insulation
- All-Weather Adhesive
- Sheet Metal
- Mechanical Fasteners
- Elastomeric Paint

7-6 MH INSULATION: TOP FILL BLOW METHOD



- 1.** Drill or cut uniform access holes in the roof adequately spaced to access the entire roof cavity



- 2.** Blow insulation into attic cavity to capacity



- 3.** Run a continuous bead of flexible and durable all-weather adhesive around the access hole



- 4.** Install a durable metal patch of equal or greater gauge than the roof material that overlaps the opening at least 2 inches on all sides, and fastening in place every 2 inches along perimeter



- 5.** Apply elastomeric paint over patch that laps at least 6 inches on all sides to create a continuous seal

NOTES

8-1 AIR SEAL ABOVE THE KNEE WALL

Aligns with SWS [3.0101.1](#), [3.0102.11](#)



BEFORE

✗ Knee walls are part of the thermal and pressure boundary



AFTER

✓ Air sealing from above continues the pressure boundary while supporting future insulation

TOOLS

- Measuring Tape
- Utility Knife
- Saw
- Drill
- Caulk Gun
- Spray Foam Gun

MATERIALS

- Extruded Polystyrene (XPS)
- Plywood
- Gypsum Board
- Lumber
- Mechanical Fasteners
- Caulk
- Spray Foam
- Mastic

8-1 AIR SEAL ABOVE THE KNEE WALL



- 1.** After clearing away debris, measure gap above knee wall in line with pressure boundary



- 2.** Cut blocking material (XPS, wood, gypsum board) to fit gap



- 3.** Securely fit infill or blocking material in place



- 4.** Ensure blocking material is located in line with preferred pressure boundary

NOTES

8-1 AIR SEAL ABOVE THE KNEE WALL



- 5.** Secure in place with mechanical fasteners or adhesive as necessary to prevent movement when insulation is installed



- 6.** Seal continuously around blocking material to preserve pressure boundary

NOTES

8-2 AIR SEAL BENEATH THE KNEE WALL

Aligns with SWS 3.0101.1



BEFORE

- ✗ Knee walls are part of the thermal and pressure boundary



AFTER

- ✓ Air sealing from below allows areas of the attic floor to be treated separately according to whether they fall in or out of the pressure boundary

TOOLS

- Measuring Tape
- Utility Knife
- Saw
- Drill
- Caulk Gun
- Spray Foam Gun

MATERIALS

- Extruded Polystyrene (XPS)
- Plywood
- Gypsum Board
- Lumber
- Mechanical Fasteners
- Caulk
- Spray Foam
- Mastic

8-2 AIR SEAL BENEATH THE KNEE WALL



1. After clearing away debris, measure gap below knee wall in line with pressure boundary



2. Cut blocking material (XPS, wood, gypsum board) to fit gap



3. Securely fit infill or blocking material in place



4. Ensure blocking material is located in line with preferred pressure boundary



5. Seal continuously around blocking material to preserve pressure boundary

NOTES

8-3 INSULATE AN ATTIC KNEE WALL WITH BATTS

Aligns with SWS 4.0104.2, 4.0104.3



BEFORE

✗ Air sealed knee walls are ready for insulation



AFTER

✓ Once insulated, this knee wall provides a continuous, contiguous, safe, and compliant thermal boundary that prevents air movement

TOOLS

- Measuring Tape
- Utility Knife
- Staple Gun

MATERIALS

- Fiberglass Batt
- Staples
- Nylon Strap
- Mechanical Fasteners
- House Wrap
- Radiant Barrier

8-3 INSULATE AN ATTIC KNEE WALL WITH BATTS



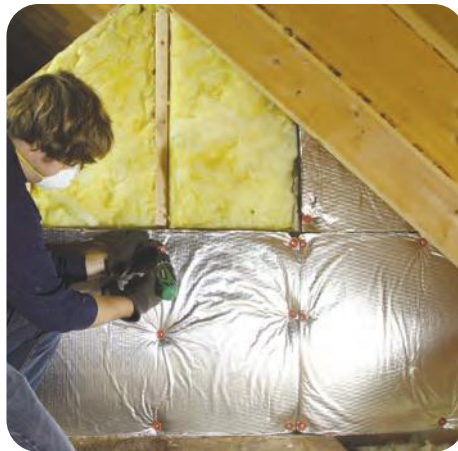
1. Measure cavities



2. Cut batts for exact fit



3. Install batts with minimal compression



4. Install backing material

NOTES

8-4 INSULATE AN ATTIC KNEE WALL WITH 2-PART SPRAY FOAM

Aligns with SWS [4.0104.5](#), [4.0104.6](#)



BEFORE

- ✗ Air seal before applying spray foam to prevent foam from leaking into conditioned space



AFTER

- ✓ Spray walls as evenly as possible

TOOLS

- Spray Foam Gun
- Fit-Tested Respirator or PAPR
- Measuring Tape
- Utility Knife
- Drill

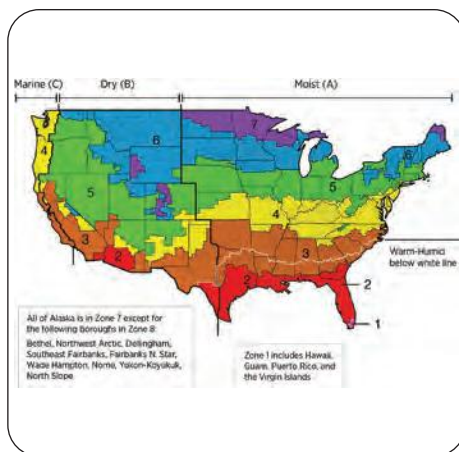
MATERIALS

- 2-Part Spray Foam
- Low-Perm Paint
- Polyisocyanurate
- Expanded Polystyrene (EPS)
- Gypsum Board
- Mechanical Fasteners
- Joint Tape
- Joint Compound

8-4 INSULATE AN ATTIC KNEE WALL WITH 2-PART SPRAY FOAM



Ensure proper PPE when installing 2-Part Spray Foam



For climate zones 5-8, install foam to a thickness of at least a class II vapor retarder or install a class II vapor retarder, such as fiber-faced polyiso, unfaced EPS or low-perm paint



If space is used for utility access, storage, or permanently habitable, separate foam from the subspace with a suitable thermal barrier covering, such as 1/2-inch gypsum board

NOTES

8-5 INSULATE AN ATTIC KNEE WALL WITH BLOWN INSULATION

Aligns with SWS 4.0104.1



BEFORE

✗ Air sealed knee walls are ready for insulation



AFTER

✓ Once insulated, this knee wall provides a continuous, contiguous, safe, and compliant thermal boundary that prevents air movement

TOOLS

- Measuring Tape
- Utility Knife
- Drill
- Staple Gun
- Hole Saw
- Insulation Machine

MATERIALS

- Extruded Polystyrene (XPS)
- Gypsum Board
- House Wrap
- Radiant Barrier
- Mechanical Fasteners
- Furring Strips
- Loose Fiberglass Insulation

8-5 INSULATE AN ATTIC KNEE WALL WITH BLOWN INSULATION



1. Securely install backing material over entire knee wall



2. Cut holes in backing material to allow access to all cavities



3. Blow insulation into cavities to meet dense-pack standards



4. Fill all cavities



5. Replace access hole plugs in backing material, if possible

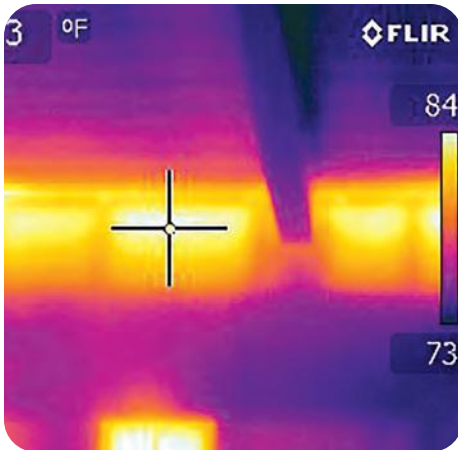


6. Seal access holes permanently and completely

NOTES

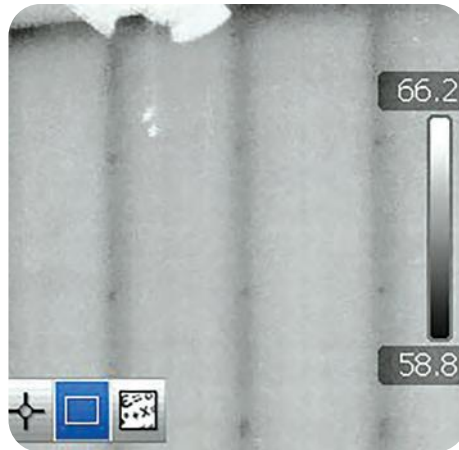
9-1 DENSE-PACK A SIDEWALL VIA EXTERIOR BLOW

Aligns with SWS 4.0202.1



BEFORE

✗ Walls that are missing insulation or underinsulated are an opportunity for energy savings



AFTER

✓ When properly insulated, walls will allow minimal heat and air transfer

TOOLS

- Measuring Tape
- Utility Knife
- Pry-Bar
- Siding Remover
- Hole Saw
- Drill
- Insulation Machine

MATERIALS

- Plastic Sheeting
- Painters Tape
- Loose Cellulose or Fiberglass Insulation
- Plugs
- Caulk
- Spray Foam
- Mechanical Fasteners

9-1 DENSE-PACK A SIDEWALL VIA EXTERIOR BLOW



- 1.** Protect work area from debris and dirt



- 2.** Ensure balloon-framed walls are blocked at top and bottom



- 3.** Ensure wall integrity is complete (no holes)



- 4.** Remove siding as needed



- 5.** Drill holes as required based on building frame design and exterior materials



- 6.** Fill cavities completely and to proper density

9-1 DENSE-PACK A SIDEWALL VIA EXTERIOR BLOW



7. If possible, ensure all cavities are filled before completing job



8. Patch holes

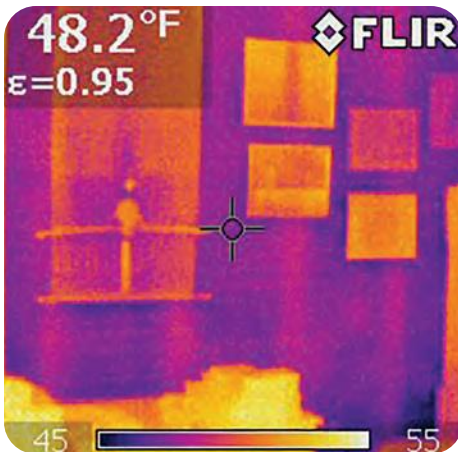


9. Replace and/or repair siding

NOTES

9-2 DENSE-PACK A SIDEWALL VIA INTERIOR BLOW

Aligns with SWS 4.0202.1



BEFORE

✗ Older houses often are lacking in insulation



AFTER

✓ Inconspicuous capped, patched, or covered holes are the ideal

TOOLS

- Measuring Tape
- Utility Knife
- Hole Saw
- Drill
- Insulation Machine
- Infrared Camera

MATERIALS

- Plastic Sheeting
- Loose Cellulose or Fiberglass Insulation
- Gypsum Board
- Joint Compound
- Caulk
- Mechanical Fasteners
- Chair Rail
- Plugs
- Painters Tape

9-2 DENSE-PACK A SIDEWALL VIA INTERIOR BLOW



- 1.** Protect work area from debris and dust



- 2.** Ensure balloon-framed walls are blocked at top and bottom



- 3.** Ensure wall integrity is complete (no holes)



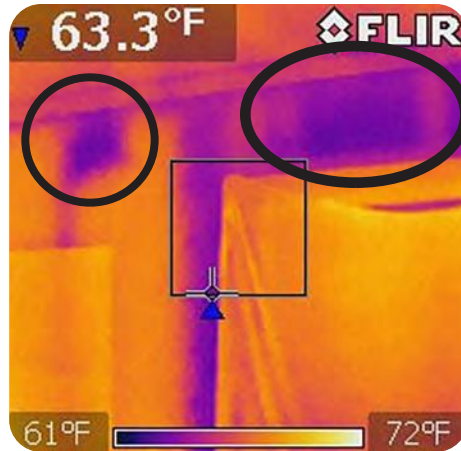
- 4.** Drill holes as required based on building design

NOTES

9-2 DENSE-PACK A SIDEWALL VIA INTERIOR BLOW



5. Fill cavities completely and to proper density



6. If possible, ensure all cavities are filled before completing job (note: dark areas were missed)



7. Patch holes. Use chair rail if preferred.

NOTES

11-1 INSTALL WEATHERSTRIPPING ON AN EXTERIOR DOOR

Aligns with SWS 3.0202.1



BEFORE

X Daylight visible
around an exterior door
indicates air infiltration



AFTER

FINAL CHECKLIST

- ✓ Door closes and opens easily
- ✓ Weatherstrip makes a good seal with the door
- ✓ Weatherstrip does not get flattened in a way that will lead to damage when used

TOOLS

- Tape Measure
- Snips
- Drill with Appropriate Bits

MATERIALS

- Weatherstripping

11-1 INSTALL WEATHERSTRIPPING ON AN EXTERIOR DOOR



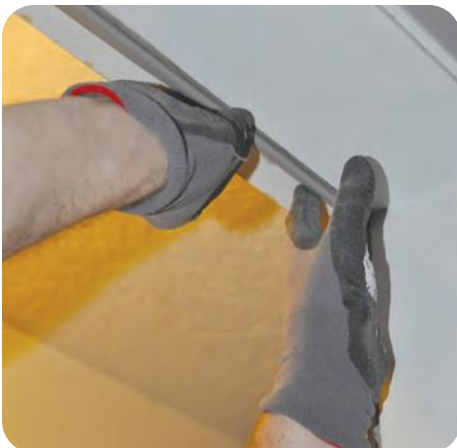
- 1.** Measure doorway for weatherstripping



- 2.** Measure door top or bottom as well for weatherstripping and potential door bottom or sweep



- 3.** Notch upper ends of side weatherstripping to allow for top piece



- 4.** Fit weatherstripping snugly into rabbet, if one exists, and against other pieces



- 5.** Fasten weatherstripping securely when no rabbet exists

NOTES

11-2 INSTALL A DOOR SWEEP OR DOOR BOTTOM ON AN EXTERIOR DOOR

Aligns with SWS 3.0202.1



BEFORE

✗ Air and water can come in under doors when there is no door bottom or sweep



AFTER

FINAL CHECKLIST

- ✓ Ensure a good seal to prevent air infiltration
- ✓ Ensure unimpeded door operation

NOTES

Door bottoms commonly are installed on new doors, those that have wooden thresholds, or to replace older existing door bottoms. For houses with a rubber threshold, door sweeps are more common.

TOOLS

- Measuring Tape
- Metal Snips
- Saw
- Drill
- Caulk Gun

MATERIALS

- Mechanical Fasteners
- Caulk

11-2 INSTALL A DOOR SWEEP OR DOOR BOTTOM ON AN EXTERIOR DOOR

STEPS 1-3: FOR DOOR SWEEP AND DOOR BOTTOM



1. Measure width of door and ensure that door sweep is appropriate length



2. Adjust threshold to ensure that it is seated tightly

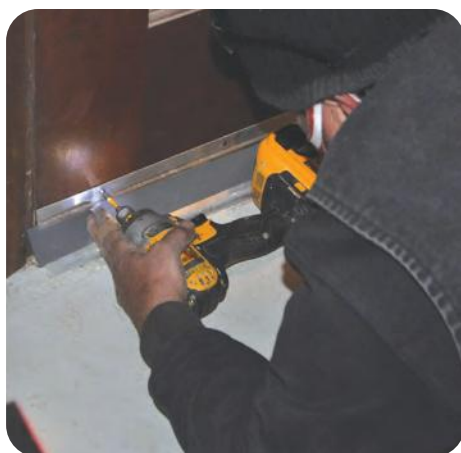


3. Apply caulk to threshold at floor on interior, and exterior if possible, to minimize water intrusion

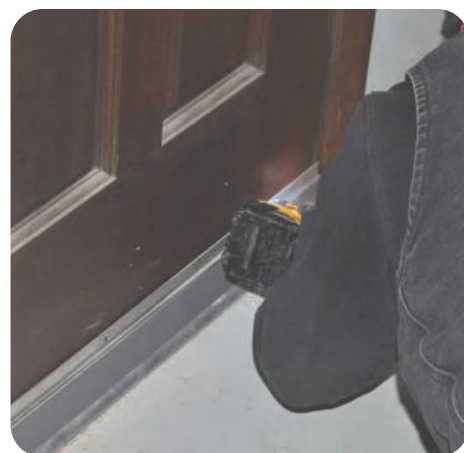
STEPS 4-6: FOR DOOR SWEEP



4. Install door sweep on interior face of door, centering on door face



5. Attach door sweep using mechanical fasteners



6. Evenly place mechanical fasteners along entire length of door sweep

11-2 INSTALL A DOOR SWEEP OR DOOR BOTTOM ON AN EXTERIOR DOOR

STEPS 4-8: FOR DOOR BOTTOM



- 4.** With threshold adjusted, measure door opening height



- 5.** Remove door from opening if height of door needs to be shortened to make room for door bottom



- 6.** Trim door, if possible, to ensure good fit of door bottom



- 7.** Trim sweep to match width of door



- 8.** Ensure that door bottom sits tight against the door and reinstall door

NOTES

12-1 AIR SEAL SILL PLATE AND RIM JOIST

Aligns with SWS 3.0104.1



BEFORE

✗ Air movement around sill plates and near rim joists needs to be addressed before insulating



AFTER

✓ Once air sealed, the cavity is ready for insulation

TOOLS

- Spray Foam Applicator
- Spray Foam Gun
- Caulk Gun

NOTES

MATERIALS

- 2-Part Spray Foam
- 1-Part Spray Foam
- Backer Rod
- Machine Mesh
- Steel Wool
- Caulk

12-1 AIR SEAL SILL PLATE AND RIM JOIST



- 1.** For exterior holes larger than 1/4 inch, steel wool or other pest blocking material before sealing



- 2.** Cut backing material to fill space



- 3.** Seal over to hold backing material in place and air seal



- 4.** Seal penetrations on subfloor as well, looking out not only for current electrical and plumbing, but also vacated holes



- 5.** Push sealant into seams where framing members meet



- 6.** Create a continuous seal on all seams

12-2 INSULATE RIM JOIST

Aligns with SWS [4.0401.1](#), [4.0401.2](#), [4.0401.3](#)



BEFORE

- ✗ Basement and crawlspace rim joists must be addressed when part of the thermal boundary



AFTER

- ✓ Foam products require a thermal barrier or coating, such as 1/2-inch gypsum board, to separate them from permanently habitable spaces

TOOLS

- Measuring Tape
- Utility Knife
- Spray Foam Applicator
- Spray Foam Gun
- Drill
- Caulk Gun

MATERIALS

- Polyisocyanurate Foam Board
- Plastic-Wrapped Fiberglass Batts
- Extruded Polystyrene (XPS)
- 2-Part Spray Foam
- 1-Part Spray Foam
- Gypsum Board
- Mechanical Fasteners
- Caulk

12-2 INSULATE RIM JOIST



1. Measure each individual cavity to be insulated and take note of obstacles for insulation



2. Cut insulation, either rigid foam board or wrapped batts, for each individual cavity



3. Ensure space is filled with no gaps or misalignment, and insulation tight to rim joist



4. Ensure insulation is secured in place and will not move over time

NOTES

As long as foam is not over 3.25 inches thick and space is not permanently habitable, insulation does not need to be covered by thermal barrier

12-2 INSULATE RIM JOIST



- 5.** If foam insulation is over 3.25 inches thick or space is permanently habitable, insulation needs to be covered by a thermal barrier, such as gypsum board



- 6.** When using wrapped or faced batts, ensure facing is to the conditioned side of the cavity and that batt is uncompressed



- 7.** Seal edges of the wrap or facing to surrounding surface to ensure a continuous barrier



- 8.** 2-part sprayfoam can also be used as rim joist insulation

NOTES

12-3 INSULATE BASEMENT WALLS IN CONDITIONED SPACE

Aligns with SWS 4.0402.4, 4.0402.5



BEFORE

✗ An uninsulated wall in a "conditioned" space allows the loss of conditioned air



AFTER

✓ A sealed continuous air barrier finishes off an insulated basement wall, providing air sealing and thermal comfort

TOOLS

- Caulk Gun
- Spray Foam Gun
- Metal Snips
- Measuring Tape
- Utility Knife
- Drill
- Staple Gun
- Taping Knife
- Mudding Trowel

MATERIALS

- | | | |
|--------------------------------|------------------------------|------------------|
| • Backer Rod | • Extruded Polystyrene (XPS) | • Joint Compound |
| • Metal Lath | • Staples | • Joint Tape |
| • Spray Foam | • Gypsum Board | |
| • Caulk | • Luan | |
| • Fiberglass Kraft-Faced Batts | • Mechanical Fasteners | |

12-3 INSULATE BASEMENT WALLS IN CONDITIONED SPACE



1. Check wall for penetrations and seal as needed



2. Check wall for water intrusion that needs to be mitigated first. All bulk sources of moisture should be directed away from the foundation walls



3. If insulation has vapor retarder on only one side, install it facing the conditioned space



4. Install insulation to prescribed R-value in full contact with the entire perimeter of foundation wall from ceiling to floor



5. Install a sealed air barrier on the conditioned side of the insulation. When using foam, gypsum board must be at least 1/2 inch to meet building codes for a thermal barrier

NOTES

12-4 INSULATE CONDITIONED CRAWLSPACE WALL

Aligns with SWS 4.0402.2, 4.0402.3



BEFORE

X Unvented crawlspaces are sometimes considered to be part of the conditioned space, so the walls need insulation



AFTER

FINAL CHECKLIST

- ✓ Insulation is or has class II vapor retarder
- ✓ Vapor retarder faces conditioned space
- ✓ Insulation laps underneath ground vapor retarder at foundation wall

TOOLS

- Measuring Tape
- Utility Knife
- Drill
- Spray Foam Gun
- Half- or Full-Face Respirator

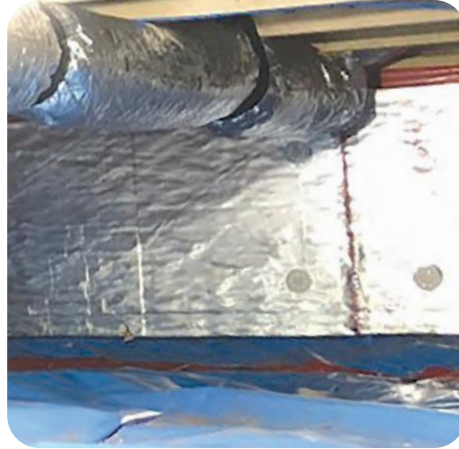
MATERIALS

- Polyisocyanurate Foam Board
- Nylon Fasteners
- 2-Part Spray Foam

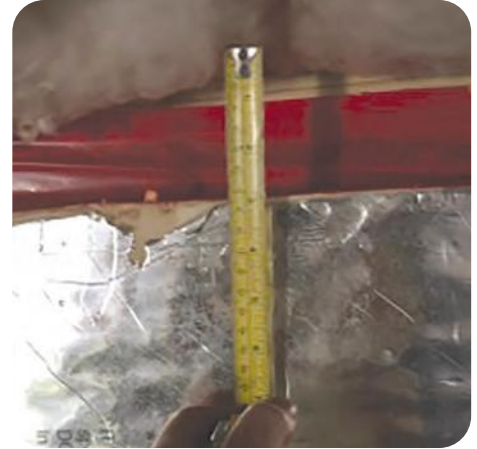
12-4 INSULATE CONDITIONED CRAWLSPACE WALL



1. Use a fire-rated material



2. Attach insulation in a durable manner



3. Leave a 3-inch termite inspection gap between the bottom of the sill plate at the top of the insulation, if needed

NOTES

13-1 AIR SEAL SMALL PENETRATIONS IN A SUBFLOOR

Aligns with SWS 3.0101.1, 3.0104.1



Many types of caulks and sealants will easily span and seal a 1/4-inch gap



One-part spray foams can also span up to 3 inches to create an air seal

TOOLS

- Caulk Gun
- Spray Foam Gun
- Utility Knife

MATERIALS

- Caulk Sealant
- One-Part Spray Foam
- Backer Rod

13-1 AIR SEAL SMALL PENETRATIONS IN A SUBFLOOR



- 1.** For small penetrations, caulk or sealant is often enough to seal the gap



- 2.** Use a backer rod or other infill material when sealing a gap larger than 1/4 inch with caulk



- 3.** Seal over the backer rod to establish the air seal



- 4.** Spray foam can also be used in areas with slightly larger penetrations

NOTES

13-2 AIR SEAL LARGE PENETRATIONS IN A SUBFLOOR

Aligns with SWS 3.0101.1, 3.0104.1



BEFORE

- ✗ Larger penetrations in the subfloor, especially plumbing chases, need to be air sealed



AFTER

- ✓ Depending on the size of the gap, one-part spray foam or a combination of infill material and foam or caulk can be used

TOOLS

- Measuring Tape
- Utility Knife
- Drill
- Spray Foam Gun
- Caulk Gun

MATERIALS

- One-Part Spray Foam
- Two-Part Spray Foam
- Caulk
- Extruded Polystyrene (XPS)
- Mechanical Fasteners

13-2 AIR SEAL LARGE PENETRATIONS IN A SUBFLOOR



1. One-part spray foam expands to fill large holes, but needs support for holes over 5 inches



2. For larger holes, rigid infill material is needed



3. Cut rigid infill with attention to locations of pipes and electrical



4. Secure rigid infill in place and seal smaller gaps around infill with appropriate materials



5. Use appropriate materials for high-temperature locations, such as around flues and chimneys

NOTES

13-3 AIR SEAL BALLOON FRAMING AT SUBFLOOR

Aligns with SWS 3.0101.1, 3.0102.4



BEFORE

✗ Balloon-framed walls have an open cavity that runs from the basement to the attic, allowing for large amounts of air flow via stack effect



AFTER

✓ Securely sealing off these cavities prevents air movement, as well as providing a barrier to hold in insulation and providing fire blocking

TOOLS

- Measuring Tape
- Utility Knife
- Saw
- Drill
- Spray Foam Gun
- Caulk Gun
- Chip Brush

MATERIALS

- Extruded Polystyrene (XPS)
- Expanded Polystyrene (EPS)
- Gypsum Board
- Lumber
- Mechanical Fasteners
- 1-Part Spray Foam
- 2-Part Spray Foam
- Caulk
- Mastic

13-3 AIR SEAL BALLOON FRAMING AT SUBFLOOR



1. Measure opening



2. Cut blocking material to fit



3. Seal all edges with caulk, foam or mastic

NOTES

Spray foam will not be used in spaces that will be exposed to habitable living space.

14-1 INSULATE A SUBFLOOR WITH BATTS ABOVE UNCONDITIONED SPACE

Aligns with SWS [4.0301.1](#), [4.0301.6](#), [4.0302.1](#)



BEFORE

✗ Uninsulated, unconditioned spaces drive down the energy efficiency of HVAC systems



AFTER

FINAL CHECKLIST

- ✓ Vapor retarder faces warm side of floor
- ✓ Consistent cover across subfloor

TOOLS

- Measuring Tape
- Utility Knife
- Drill

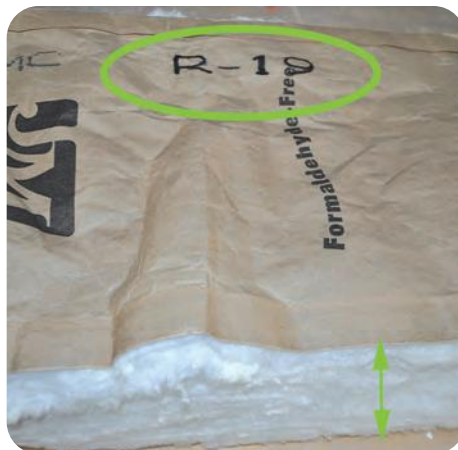
MATERIALS

- Kraft-Faced Fiberglass Batts
- Strapping
- Netting
- Rigid Barrier Such as Extruded Polystyrene (XPS)
- Mechanical Fasteners

14-1 INSULATE A SUBFLOOR WITH BATTS ABOVE UNCONDITIONED SPACE



- 1.** Ensure air sealing is complete



- 2.** Insulation R-value matches work order



- 3.** Batt vapor retarder faces warm side of floor



- 4.** Batts installed with no gaps

NOTES

14-1 INSULATE A SUBFLOOR WITH BATTS ABOVE UNCONDITIONED SPACE



- 5.** Batts are in good contact with subfloor



- 6.** Batts held in place with physical fasteners, with minimal compression



- 7.** In areas where exposure to outside elements or vermin may be a concern, such as cantilevered or exposed floors, a rigid barrier is an extra layer of protection

NOTES

14-2 INSULATE A SUBFLOOR WITH BLOWN INSULATION ABOVE UNCONDITIONED SPACE

Aligns with SWS [4.0301.2](#), [4.0301.3](#), [4.0301.4](#), [4.302.2](#), [4.0302.3](#)

BEFORE YOU BEGIN



Uninsulated, unconditioned spaces drive down the energy efficiency of HVAC systems

Description /Comment

Floor Insulation - Loose-fill + Rigid Barrier - R-19

Floor Insulation - Loose-fill + Rigid Barrier - R-19

Floor Insulation - Loose-fill + Rigid Barrier - R-19

- ✓ Review work order to verify if dense-pack or loose fill is required. Netting a subfloor will mean loose fill, but a rigid barrier can mean either.

TOOLS

- Measuring Tape
- Utility Knife
- Scissors
- Caulk Gun
- Insulation Machine
- Pressure Gauge
- Hole Saw

MATERIALS

- Netting
- Rigid Barrier
Such as Extruded Polystyrene (XPS)
- Staples
- Mechanical Fasteners
- Caulk
- Cellulose or Fiberglass Loose Insulation

14-2 INSULATE A SUBFLOOR WITH BLOWN INSULATION ABOVE UNCONDITIONED SPACE



- 1.** Verify all air sealing and prep work is complete



- 2.** Attach rigid barrier to cover entire cavity



- 3.** Seal seams between sheets of rigid material to prevent air movement and insulation leakage



- 4.** Cut an access hole into each cavity of the floor, large enough for fill tube



- 5.** Use appropriate fill tube to correspond with work order requirements



- 6.** Fill cavity completely to density required by work order

14-2 INSULATE A SUBFLOOR WITH BLOWN INSULATION ABOVE UNCONDITIONED SPACE



- 7.** Plug access hole either with original material cut out or appropriate replacement



- 8.** Seal around plug to keep it secure and air tight



- 9.** For work orders that require netting, secure a smooth layer of netting across the bottom of floor joists



- 10.** Keep staples close together



- 11.** Cover the entire cavity to ensure continuous insulation coverage and prevent insulation from blowing out the ends

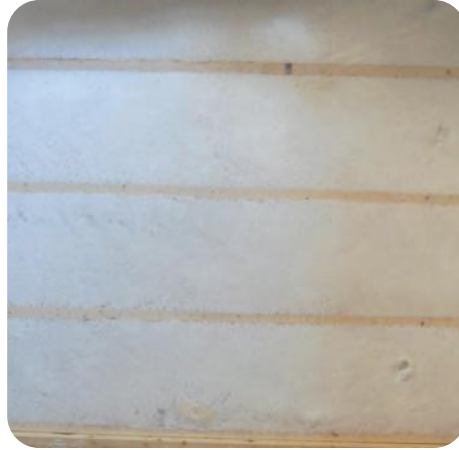


- 12.** Cut access hole for fill tube

14-2 INSULATE A SUBFLOOR WITH BLOWN INSULATION ABOVE UNCONDITIONED SPACE



13. Loose fill netting to required density



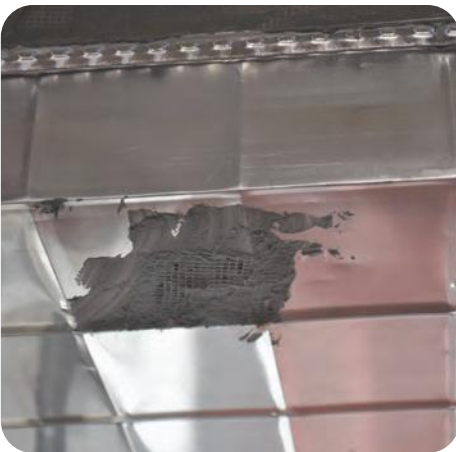
14. Ensure insulation coverage is even and continuous throughout floor cavities

NOTES

15-1 INSULATE A MANUFACTURED HOME BELLY

Aligns with SWS 4.0302.9, 4.0302.1, (3.0102.5,
3.0102.6, 3.0102.7)

BEFORE YOU BEGIN



CHECKLIST

- ✓ Air and duct sealing complete
- ✓ Electrical/plumbing issues fixed
- ✓ Belly board repaired/replaced

TOOLS

- Measuring Tape
- Utility Knife
- Drill
- Insulation Machine
- Pressure Gauge
- Saw

MATERIALS

- Belly Wrap
- Belly Board
- Caulk
- Mechanical Fasteners
- Mastic
- Spray Foam
- Extruded Polystyrene (XPS)

15-1 INSULATE A MANUFACTURED HOME BELLY



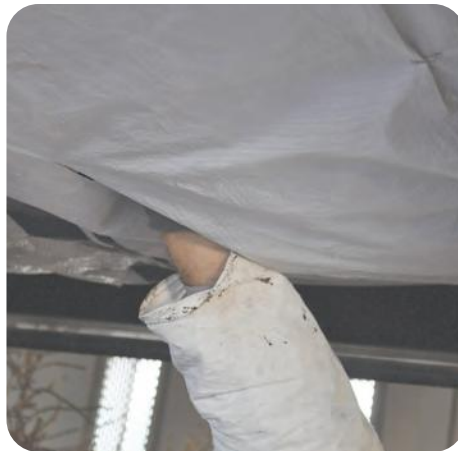
1. Remove old insulation and make repairs as needed



2. Attach new belly wrap



3. Seal seams of belly wrap



4. Cut access holes to ensure entire cavity will receive continuous and consistent insulation

NOTES

15-1 INSULATE A MANUFACTURED HOME BELLY



- 5.** Fill entire belly cavity to prescribed R-value



- 6.** Apply waterproof, permanent adhesive to patch for belly wrap, with patch sized at least 3 inches larger than hole in barrier



- 7.** Stitch staple patch to ensure permanent adhesion

NOTES

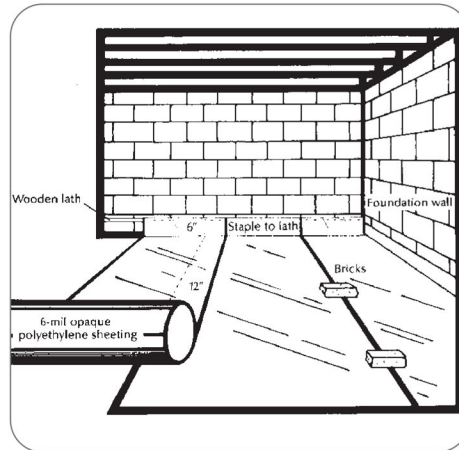
16-1 INSTALL A CRAWLSPACE VAPOR RETARDER

Aligns with SWS 2.0202.1, 2.0202.2, 2.0202.3, (3.0104.1)



BEFORE

- ✗ Moisture and resultant mold issues in crawlspaces can cause extensive damage to floor assemblies and foundations



AFTER

- ✓ A well-installed vapor retarder helps to minimize ground moisture vapor and soil gas, such as radon

TOOLS

- Utility Knife
- Measuring Tape
- Caulk Gun

MATERIALS

- 6 Mil Plastic Sheeting
- Durable Adhesive Tape
- Furring Strips
- Mechanical Fasteners
- Ballast
- Sealant

16-1 INSTALL A CRAWLSPACE VAPOR RETARDER



- 1.** Clear out storage and debris



- 2.** Select appropriate materials



- 3.** Spread out plastic as flat as possible



- 4.** Extend plastic a minimum of 6 inches up walls, piers and columns on site built homes

NOTES

16-1 INSTALL A CRAWLSPACE VAPOR RETARDER



- 5.** Extend plastic a minimum of 6 inches up piers and columns on mobile homes



- 6.** Use a minimum 12 inch reverse shingle overlap and tape seams



- 7.** Plastic needs to be fastened in a durable way: e.g. tape, sealant, screws



- 8.** Use ballast to hold down vapor retarder

NOTES

16-2 REPAIR AN EXISTING CRAWLSPACE VAPOR RETARDER

Aligns with SWS [2.0202.1](#), [2.0202.2](#), [2.0202.3](#), ([3.0104.1](#))



BEFORE

X Improperly installed and damaged vapor retarders do not prevent moisture and resultant mold issues in crawlspace



AFTER

✓ A well-installed vapor retarder helps to minimize ground moisture vapor and soil gas, such as radon

TOOLS

- Utility Knife
- Measuring Tape
- Caulk Gun

MATERIALS

- 6-Mil Plastic Sheeting
- Durable Adhesive Tape
- Furring Strips
- Mechanical Fasteners
- Ballast
- Sealant

16-2 REPAIR AN EXISTING CRAWLSPACE VAPOR RETARDER



- 1.** When repairing along the ground, ensure seams overlap uphill in a reverse shingle pattern



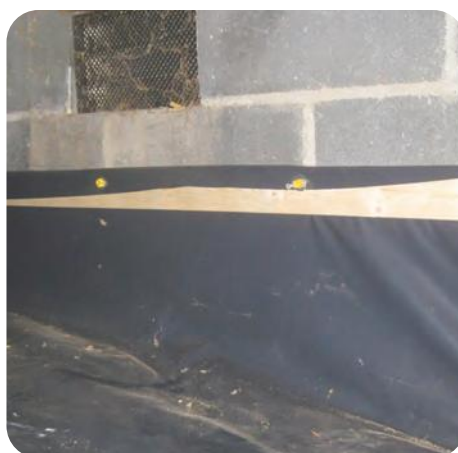
- 2.** Overlap seams by at least 12 inches



- 3.** Spread out plastic as flat as possible



- 4.** Plastic needs to be fastened in durable way: e.g. tape, sealant



- 5.** Ensure plastic extends a minimum of 6 inches up walls, piers and columns and is securely attached

NOTES

17-1 VENT A CLOTHES DRYER

Aligns with SWS [6.0101.1](#), [6.0101.2](#), [6.0202.1](#)



BEFORE

- ✗ Dryer vents with long bumpy runs create a fire hazard



AFTER

- ✓ When properly vented, dryers run more efficiently, are safer, and last longer

TOOLS

- Metal Snips or Grinder
- Flathead Screwdriver
- Utility Knife

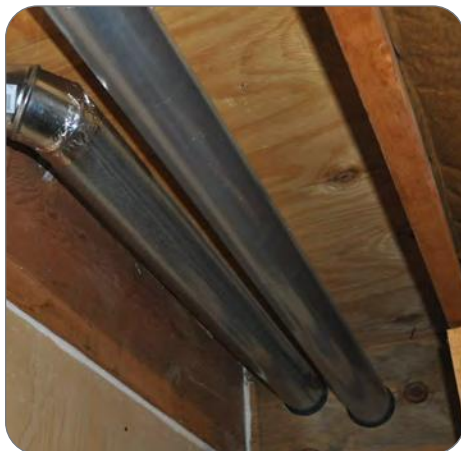
MATERIALS

- 28-Gauge Rigid Metal Ducting
- Worm-Drive Clamps
- Backdraft Damper
- Duct Insulation
- Foil Tape

17-1 VENT A CLOTHES DRYER



- 1.** Keep duct run as short as possible to prevent backup of lint



- 2.** Duct material is metal rigid with smooth interior



- 3.** Correct fasteners are used (no screws penetrating into duct)



- 4.** Duct terminates to outside, at a downward slope when possible

NOTES

17-1 VENT A CLOTHES DRYER



5. Termination has backdraft damper and no cage



6. Duct in uninsulated space is insulated



7. If duct run must exceed 35 feet, install booster fan

NOTES

18-2 INSTALL A HARD-DUCTED EXHAUST VENT

Aligns with SWS [6.0101.1](#), [6.0101.2](#), [6.0201.1](#), [6.0201.2](#)



BEFORE

- ✗ Kitchens and bathrooms must be ventilated to control moisture, vapor, and combustion gases

TOOLS

- Measuring Tape
- Hole Saw
- Drill
- Caulk Gun

AFTER

KITCHEN CHECKLIST

- ✓ Located within 5 feet of primary cooking surface
- ✓ At least 100 cfm but not more than 3 sones
- ✓ Efficacy of 2.8 cfm/watt or more

BATHROOM CHECKLIST

- ✓ Located in center of room
- ✓ At least 50 cfm but not more than 2 sones
- ✓ Efficacy of 4 cfm/watt or more

MATERIALS

- Mastic
- Brush
- Foil Tape
- Duct Insulation
- 28-Gauge Ducting
- Vent Termination
- Caulk

18-2 INSTALL A HARD-DUCTED EXHAUST VENT



1. Fasten rigid duct using three equally spaced screws



2. Keep duct run as short as possible with few turns, and run to exterior – either via roof or sidewall



3. Seal all joints with mesh and mastic or foil tape



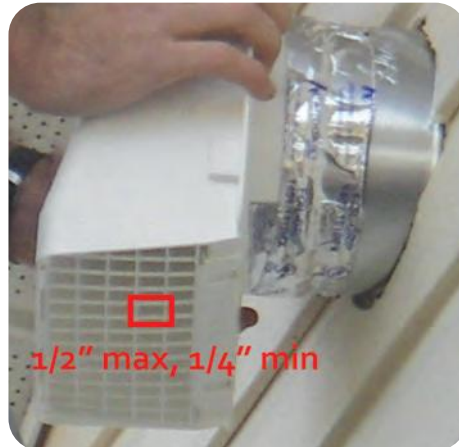
4. Completely seal joints

NOTES

18-2 INSTALL A HARD-DUCTED EXHAUST VENT



5. Locate exterior vent based on duct run and size hole less than 1/2 inch larger than duct



6. Chose appropriate exterior termination to match size of duct while minimizing water intrusion and pest infestation. Seal around exterior termination as needed



7. Ducting that runs through unconditioned space will be insulated to R-8

NOTES

19-1 SEAL DUCTS WITH MASTIC

Aligns with SWS [5.0106.1](#), [6.0101.2](#), [6.0101.3](#), ([5.0105.1](#), [5.0105.2](#), [5.0105.3](#))



CHECKLIST

- ✓ Ensure ducts are properly connected
- ✓ Ensure ducts are properly supported

TOOLS

- Drill
- Zip Tie Tensioner
- Caulk Gun

MATERIALS

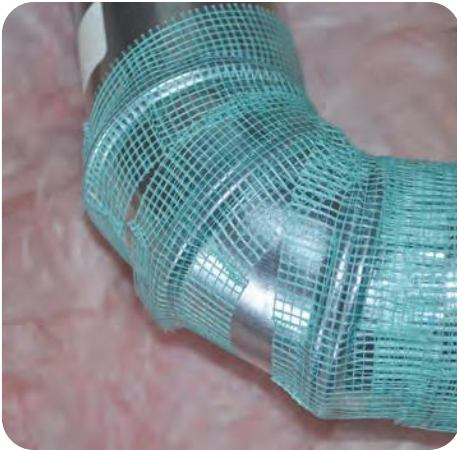
- Mastic
- Fiberglass Mesh Tape
- Chip Brush
- Mechanical Fasteners
- 26-Gauge Metal Sheeting
- Duct or Electrical Tape (for temporary use)
- Flexible Caulking
- Butyl Tape

NOTES

Mastic alone can be used for gaps < 1/8-inch, when gap is located more than 10 inches from air handler and static pressure is less than 1 iwc.

19-1 SEAL DUCTS WITH MASTIC

**METHOD A - FOR SMALL GAPS (LESS THAN 1/4 INCH)
INCLUDING ALL JOINTS, SEAMS, AND CRACKS IN DUCT SYSTEM**



A-1. Apply fiberglass mesh tape over all gaps, seams, joints, etc.



A-2. Apply mastic over all mesh tape and all gaps, seams, joints, etc.

NOTES

19-1 SEAL DUCTS WITH MASTIC

METHOD B - FOR MEDIUM GAPS (1/4-3/4 INCH) SUCH AS MINOR HOLES AND PENETRATIONS IN DUCT SYSTEM



B-1. Small holes and penetrations require one additional step



B-2. Apply temporary tape as a backer to hold mastic



B-3. Apply mastic over the tape



B-4. Push fiberglass mesh into the mastic



B-5. Apply additional mastic over mesh and tape, extending at least 1 inch past edges of tape in all directions

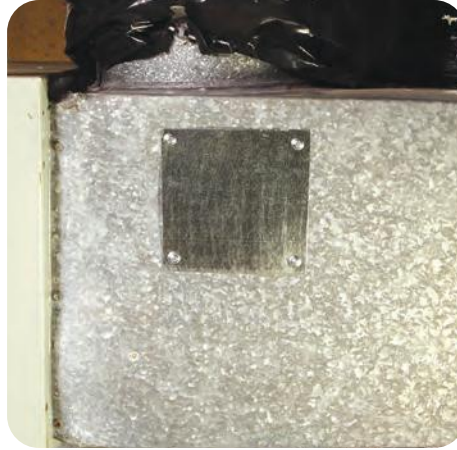
NOTES

19-1 SEAL DUCTS WITH MASTIC

METHOD C - FOR LARGER GAPS OR HOLES (OVER 3/4 INCH)



C-1. Larger holes require a different process



C-2. Cut patch that will extend over entire gap or hole and affix with mechanical fasteners



C-3. Apply mastic over edges and fasteners of patch and push fiberglass mesh into it



C-4. Apply additional mastic over mesh, extending at least 1 inch past tape and seam in all directions

NOTES

METHOD D - FOR CONNECTIONS BETWEEN DUCT BOOT AND SURFACE



D-2. Clean the area around the duct boot to allow for better adhesion of fiberglass mesh tape



D-4. Apply mastic over mesh tape and allow to dry completely before reinstalling register

[illegible]

19-1 SEAL DUCTS WITH MASTIC

METHOD E - AT THE AIR HANDLER



E-1. Ensure that filter slot cover is removable so that occupant can change filter as needed, but does not allow for bypass air around air filter



E-2. Seal unnecessary holes in air handler cabinet with butyl tape

NOTES

20-1 INSULATE HARD PIPE DUCTS

Aligns with SWS 5.0107.1, 5.0105.2, (6.0202.1)



TOOLS

- Measuring Tape
- Utility Knife

BEFORE YOU BEGIN

VERIFY DUCTS ARE:

- ✓ Connected properly
- ✓ Supported properly
- ✓ Air-sealed properly

AFTER

Well-supported and uniformly-insulated ducts perform at higher efficiency

MATERIALS

- Duct Insulation (min R-8) with Exterior Vapor Retarder
- UL-181 Tape
- Twine
- Zip Ties

20-1 INSULATE HARD PIPE DUCTS



- 1.** Layer insulation around duct, fitting between duct and construction members as necessary and able



- 2.** Tape joints to secure insulation in place



- 3.** Insulation will not be compressed



- 4.** Tape around circumference of duct at regular intervals



- 5.** Twine or zip ties can also be used to offer additional support for insulation – but need not to cause compression on the insulation

NOTES

20-2 REPAIR OR REPLACE INSULATED FLEX DUCTS

Aligns with SWS 5.0107.1, 5.0105.2



TOOLS

- Measuring Tape
- Utility Knife
- Zip Tie Tensioner

BEFORE YOU BEGIN

VERIFY DUCTS ARE:

- ✓ Connected properly
- ✓ Supported properly
- ✓ Air-sealed properly

AFTER

Ducts in unconditioned spaces require a minimum R-8 insulation. If exposed to the exterior, R-12.

MATERIALS

- Duct Insulation (min R-8) with Exterior Vapor Retarder
- UL-181 Tape
- Twine
- Zip Ties

20-2 REPAIR OR REPLACE INSULATED FLEX DUCTS



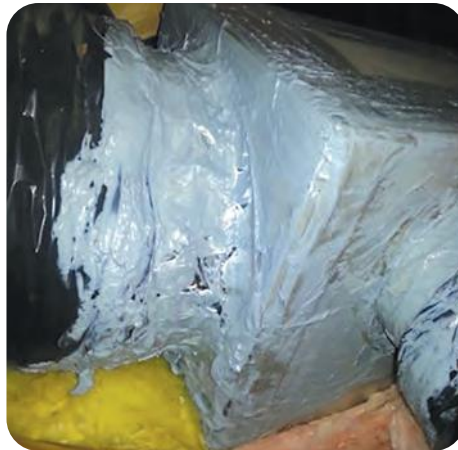
1. Secure duct liner to hard connections with zip tie and tensioner tool



2. Pull insulation over hard connections as needed



3. Secure vapor retarder layer at boots



4. Seal new joints

NOTES

20-3 INSULATE SUPPLY BOOTS

Aligns with SWS 5.0107.1



X Exposed duct boots are a prime location for energy loss

BEFORE YOU BEGIN

Ensure ducts are:

- ✓ Properly connected
- ✓ Properly supported
- ✓ Properly air-sealed

TOOLS

- Measuring Tape
- Utility Knife
- Zip Tie Tensioner

MATERIALS

- R-8 Minimum Flex Duct insulation
- Duct Insulation with Vapor Retarder
- Water Heater Blanket with Vapor Retarder
- Zip Ties
- Twine
- Spray Adhesive
- Mastic
- UL 181 Fiberglass Mesh Tape

20-3 INSULATE SUPPLY BOOTS



1. Insulate all exposed metal of the boot



2. Ensure a complete vapor barrier by sealing all seams with mastic

NOTES

- R-8 minimum for ducts in unconditioned spaces.
- R-12 minimum for ducts exposed to outside elements.

20-4 INSULATE PLENUM

Aligns with SWS 5.0107.1



BEFORE

- ✗ Return and supply plenums left uninsulated with contact to unconditioned spaces allow for energy loss



AFTER

FINAL CHECKLIST

- ✓ Ducts are connected properly
- ✓ Ducts are supported properly
- ✓ Ducts are air-sealed properly

TOOLS

- Measuring Tape
- Utility Knife

MATERIALS

- R-8 Minimum Duct Insulation
- Spray Adhesive
- Twine
- Mechanical Fasteners
- Extruded Polystyrene
- Gypsum Board
- Mastic
- UL-181 Mesh Tape
- Butyl Tape

20-4 INSULATE PLENUM



1. Cover any unnecessary holes in the air handler cabinet



2. Check return cavities inside building envelope to ensure they are sealed off from unconditioned spaces



3. Patch holes in ducts and plenum with appropriate materials (see 19-1 Seal Ducts with Mastic)



4. Prepare plenum by removing any residue from old insulation

NOTES

Expanded
Polystyrene (EPS) is
not appropriate for use
in high-temperature
areas - particularly
inside framed
return platforms

20-4 INSULATE PLENUM



- 5.** Measure insulation to take maximum advantage of large sheets of duct insulation



- 6.** Cut to size for area to be covered. Insulate all exposed metal of the plenum



- 7.** To ensure a complete vapor barrier, trim insulation from vapor barrier to create overlap flap for seams, or tape seams with UL-181 tape



- 8.** Ensure clean surface for adhesion at overlap seam

NOTES

20-4 INSULATE PLENUM



- 9.** Spray adhesive over area where piece will be installed



- 10.** Ensure smooth and unrippled adhesion of insulation to metal of plenum



- 11.** Spray adhesive along vapor retarder at seam to seal closed



- 12.** Ensure overlapping flap securely adhered to the lower layer to maintain complete vapor barrier, or tape seams with UL-181 tape



- 13.** Support insulation to prevent movement over time, securing in place without puncturing vapor retarder

21-1 WINDOW INSTALLATION

Aligns with SWS 3.0201.9



BEFORE

X Single pane aluminum-frame windows offer little to no thermal break from outdoors



AFTER

FINAL CHECKLIST

- ✓ Window opens and closes properly
- ✓ All exterior edges are air-sealed
- ✓ Water will flow away from window

TOOLS

- Measuring Tape
- Utility Knife
- Drill
- Spray Foam Gun
- Vacuum

MATERIALS

- Plastic Sheeting
- Shims
- Flashing Tape
- Mechanical Fasteners
- Backer Rod
- Spray Foam

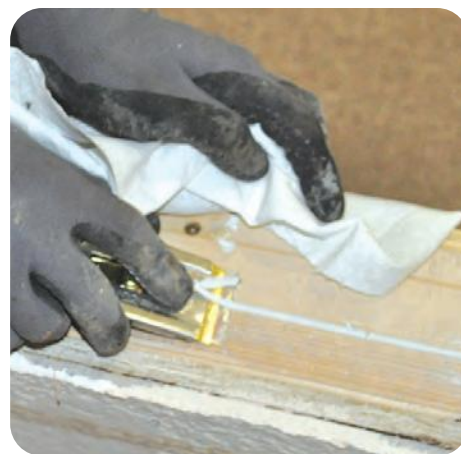
21-1 WINDOW INSTALLATION



1. Measure window to be replaced



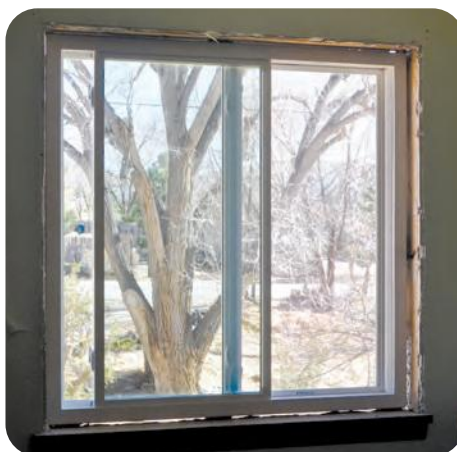
2. Remove existing window



3. Clean up sash or jam and repair any issues



4. Replace flashing as needed



5. Dry fit window



6. Level the window using shims and secure with mechanical fasteners

21-1 WINDOW INSTALLATION



7. Ensure window is operational



8. Caulk all exterior edges



9. Insulate and seal rough opening with backer rod and/or spray foam



10. Replace trim

NOTES

21-2 DOOR INSTALLATION

Aligns with SWS 3.0202.2



BEFORE

X In rare cases, doors are too damaged to be retrofitted and must be replaced



AFTER

FINAL CHECKLIST

- ✓ Weatherstrip and door bottom installed
- ✓ Door opens and closes properly
- ✓ All exterior trim is caulked
- ✓ Water will flow away from the door

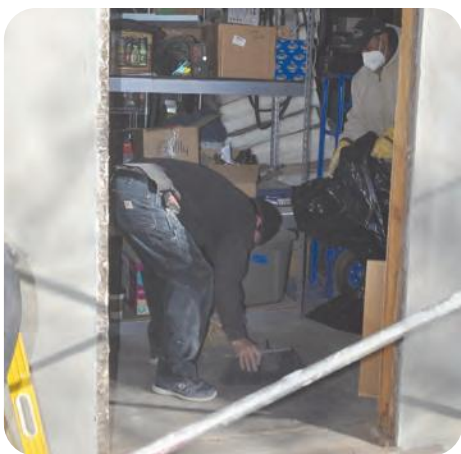
TOOLS

- Measuring Tape
- Utility Knife
- Saw
- Drill
- I-beam Level
- Caulk Gun
- Spray Foam Gun
- Jamb Saw

MATERIALS

- Lumber
- Shims
- Mechanical Fasteners
- Adhesive
- Spray Foam
- Caulk
- Insulation
- Weatherstrip
- Door Bottom
- Lock set

21-2 DOOR INSTALLATION



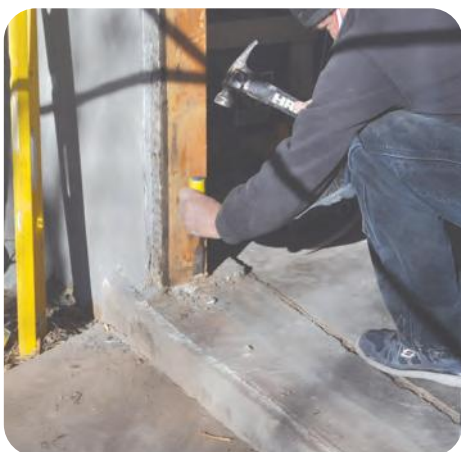
- 1.** Remove old door and clear away debris



- 2.** Measure opening and ensure that the door on location is the proper size



- 3.** Prepare opening by ensuring that jacks are plumb and threshold is level



- 4.** Frame in and adjust opening as necessary to accommodate new door



- 5.** Attach flashing, if necessary, to protect any new materials from water intrusion



- 6.** Using shims, locate door in frame, adjusting for level and plumb, and attach securely

21-2 DOOR INSTALLATION



- 7.** Ensure door is fully operational and lock set is aligned



- 8.** Insulate gaps between door jamb and frame



- 9.** Seal rough opening, to prevent both air and water intrusion



- 10.** Replace trim



- 11.** Seal along threshold, ensuring water will flow away from door

NOTES

Check file for age
of house and complete
any required lead
testing before work
begins.

22-1 WINDOW GLASS REPLACEMENT

Aligns with SWS 3.0201.1, 3.0201.4



BEFORE

✗ Broken, cracked or missing glass breaks the pressure and thermal boundary



AFTER

✓ Newly installed glass is sealed to prevent air and water infiltration

TOOLS

- Heavy Work Gloves
- Glass Cutter
- Scraping Tool

MATERIALS

- Cleaning Solution
- New Window Pane
- Silicone Caulk
- Window Glazing
- Tape

22-1 WINDOW GLASS REPLACEMENT



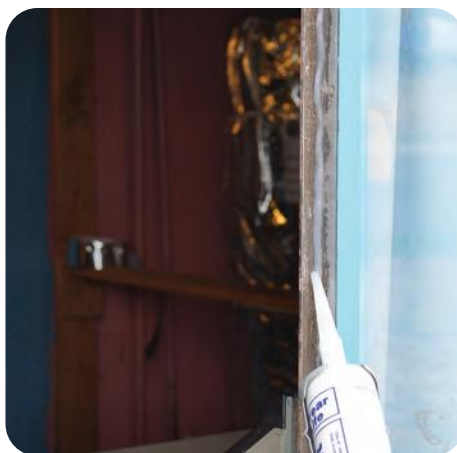
1. Remove all broken glass



2. Clean all debris, caulk, etc., from sash



3. Measure rough opening for window pane, size pane 1/8-3/16 inches less than RO



4. Run interior bead of caulk

NOTES

22-1 WINDOW GLASS REPLACEMENT



5. Install new glass, using tempered where code requires, that meets or exceeds previous glazing



6. Hold new pane with tape or stops



7. Caulk all edges

NOTES

23-1 INSULATE AN ELECTRIC DOMESTIC WATER HEATER

Aligns with SWS 7.0301.2



TOOLS

- Utility knife

BEFORE YOU BEGIN

Check data plate on water heater to find existing insulation level (if any) and verify additional insulation is not prohibited

AFTER

- ✓ A properly insulated water heater safely reduces standby losses

MATERIALS

- Water Heater Insulation Blanket
- Foil Tape
- Tie Strap
- Wire
- Twine

23-1 INSULATE AN ELECTRIC DOMESTIC WATER HEATER



1. Insulate tank with minimum R-10 or better



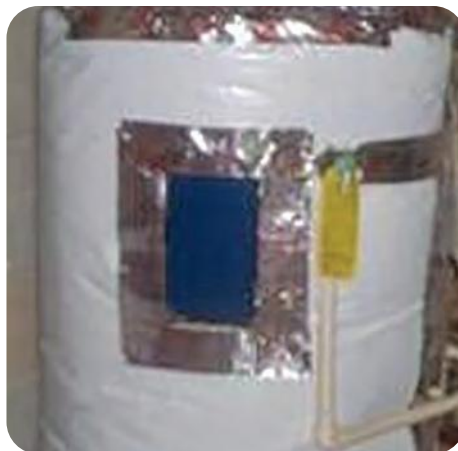
2. Ensure a continuous vapor barrier with no gaps



3. Do not obstruct temperature and pressure relief valve (T&P)



4. Tape all seams and edges airtight



5. Cut flaps at access plates and tape edges to seal



6. Secure using tie strap or twine in three places with minimal compression

NOTES

23-2 INSULATE A GAS DOMESTIC WATER HEATER

Aligns with SWS 7.0301.2



TOOLS

- Utility knife

BEFORE YOU BEGIN

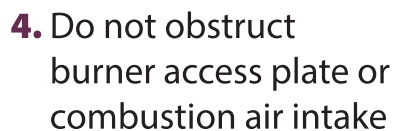
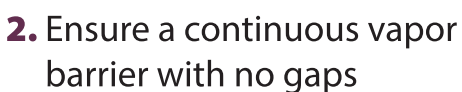
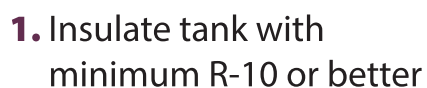
Check data plate on water heater to find existing insulation level (if any) and verify additional insulation is not prohibited

AFTER

- ✓ A properly insulated water heater safely reduces standby losses

MATERIALS

- Water Heater Insulation Blanket
- Foil Tape
- Tie Strap
- Wire
- Twine



NOTES

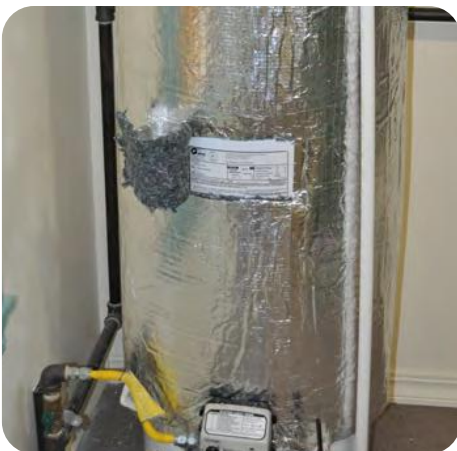
23-2 INSULATE A GAS DOMESTIC WATER HEATER



- 5.** Do not obstruct temperature and pressure relief valve (T&P)



- 6.** Tape all seams and edges airtight



- 7.** Cut flaps at access plates, tape them shut and then label from the exterior



- 8.** Secure seams with tie strap, wire or twine and minimal compression

NOTES

23-3 INSULATE DOMESTIC HOT WATER (DHW) PIPES

Aligns with SWS 7.0301.1



Insulate pipes to a minimum R-3 at least 6 feet from DHW on both hot and cold lines



Insulation should be continuous with no gaps

TOOLS

- Utility Knife
- Measuring Tape

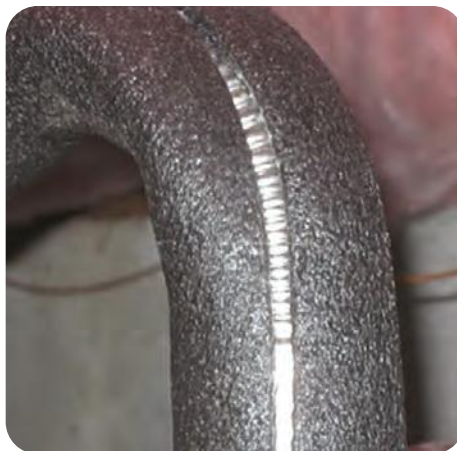
MATERIALS

- Pipe Insulation
- Tape or Tie Straps

23-3 INSULATE DOMESTIC HOT WATER (DHW) PIPES



Keep insulation back at least 6 inches from draft diverter and single wall pipe



Do not rely on manufactured adhesive seam seal to hold closed



Secure seams with tape



When path is partially obstructed or curved, shape insulation to the location to eliminate gaps

NOTES

24-1 INSTALL A LOW-FLOW SHOWERHEAD

Aligns with SWS 7.0201.1



BEFORE

✗ Higher flow showerheads waste water and cause water heaters to run more than necessary



AFTER

✓ Low-flow showerheads must be 2.5 gallon per minute (gpm) or less flow rate, to reduce heating load and encourage lower water use.

TOOLS

- Adjustable Wrench
- Pipe Wrench
- Channel Locks
- Buffer Material
- Rag
- Toothbrush/Wire brush

MATERIALS

- Thread Tape
- New Showerhead

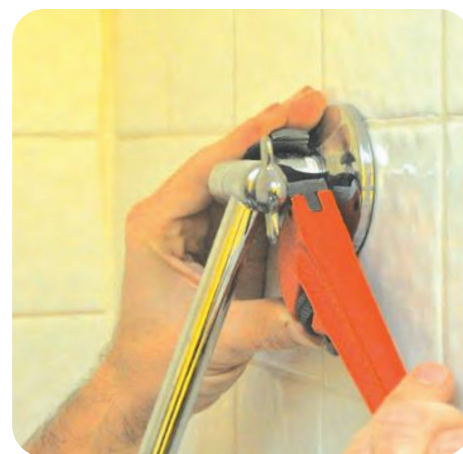
24-1 INSTALL A LOW-FLOW SHOWERHEAD



1. Carefully remove old showerhead with adjustable wrench, taking care not to loosen shower arm



2. If old showerhead does not have flat sides at connection, wrap with buffer material, such as a piece of rubber



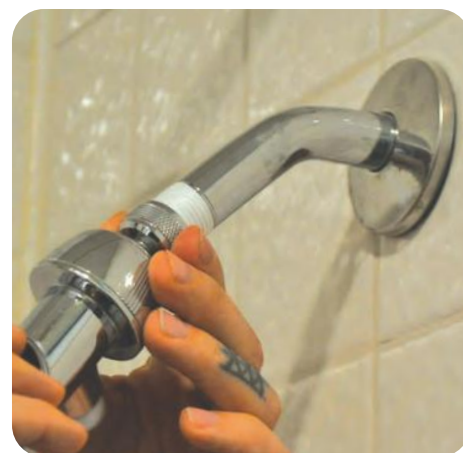
3. Then use pipe wrench or channel locks to loosen connection at shower arm



4. Clean threads of shower arm well to remove old residue



5. Wrap new thread tape around threads



6. Install new showerhead according to occupant needs, such as hand-held, shutoff or swivel

24-1 INSTALL A LOW-FLOW SHOWERHEAD



7. Ensure that connections will not leak while preventing damage by using buffer material



8. Use thread tape at all connections



9. Verify proper water flow and that there are no leaks

NOTES

24-2 INSTALL A LOW-FLOW FAUCET AERATOR

Aligns with SWS 7.0201.1



BEFORE

- ✗ Faucets without aerators produce excess flow and old aerators can impinge flow or cause leakage



AFTER

- ✓ Low-flow faucet aerators limit flow to 2.2 gpm or less and reduce heating load by encouraging lower water use

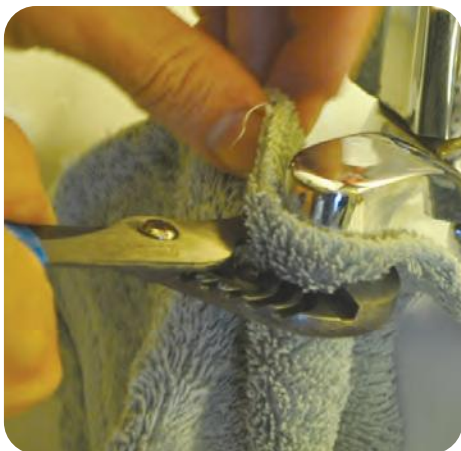
TOOLS

- Adjustable Wrench/
Aerator Wrenches
- Soft Rag

MATERIALS

- Thread Tape
- WaterSense Aerator

24-2 INSTALL A LOW-FLOW FAUCET AERATOR



- 1.** Using adjustable wrench or aerator wrench, gently remove old aerator, taking care not to damage faucet



- 2.** Once loose, continue removal by hand



- 3.** Clean threads of the faucet with a soft rag to remove any debris



- 4.** Verify size and type of aerator will work with faucet



- 5.** Wrap thread tape around new aerator if male, or faucet threads if it takes a female aerator



- 6.** Carefully install new aerator, ensuring any necessary rubber washers are in place and taking care not to cross-thread

24-2 INSTALL A LOW-FLOW FAUCET AERATOR



7. Do not overtighten aerator



8. Run water through new aerator to verify it is not cross-threaded and no water is leaking around sides



9. Remove old aerator from property and permanently dispose of it

NOTES

For kitchen sinks, 1.0-1.5 gpm save water without affecting performance. For lavatory sinks, as low as 0.5 gpm is adequate.

25-1 INSTALL ROOF VENT

Aligns with SWS 6.0101.2, 6.0201.1, 6.0201.2, 4.0188.2



BEFORE

- ✗ Kitchens, bathrooms, and attics all have requirements for ventilation to the exterior, as well as dryer and combustion exhaust venting



AFTER

- ✓ A properly installed vent preserves the integrity of the roof

TOOLS

- Measuring Tape
- Drill
- Hole Saw
- Caulk Gun
- Utility Knife
- Mastik Brush

MATERIALS

- Vent with Collar
- Caulk
- Mechanical Fasteners
- Joint Tape
- Mastik

25-1 INSTALL ROOF VENT



1. Determine the appropriate vent dependent on its use – attic ventilation, kitchen hood, bath fan, dryer exhaust (these should ideally be lower), or combustion exhaust
2. Locate ideal hole location from attic side of roof deck and drill center hole



3. Mark out size and location of hole on roof deck, verifying size of termination collar

NOTES

25-1 INSTALL ROOF VENT



- 4.** From roof side, cut hole slightly larger than termination collar. If shingle roof, cut just below one layer of shingles in order to preserve overlap



- 5.** Run sealant around perimeter of vent and tuck under any surrounding uphill shingles. Seal uphill shingles over vent



- 6.** Collar should extend down through roof into attic



- 7.** Slide vent ducting to collar, sized to match the duct diameter, and attach with mechanical fasteners



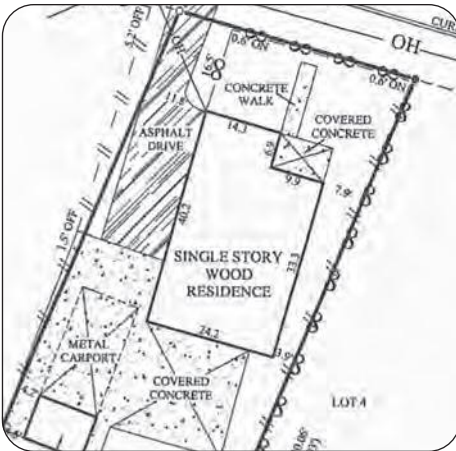
- 8.** Seal duct joints with mesh and mastic to complete vent installation. Insulate as required

25-2 LOCATE AN EXTERIOR TERMINATION

Aligns with SWS 6.0101.2

CHECKLIST

- ✓ Locate all exhaust terminations to the outside – not attics and crawlspaces – and:



- ✓ At least 3 feet from the property line



- ✓ At least 3 feet from all operable openings



- ✓ At least 10 feet from a mechanical intake (Note: pictured stacks are too close to one another)



- ✓ If near soffit, no open soffit venting for at least 6 feet on each side

NOTES

Index of Standard Work Specifications Referenced in Field Guide:

**Note: Inclusion on this list does not imply that every Specification within the cited Detail is addressed in the Field Guide. Job Aids in parentheses () presume referenced SWS has been followed.

| 2020 SWS | Detail Title | Job Aids |
|------------------|---|---|
| 2.0202.1 | Un-Vented Subspaces – Ground Cover | <u>16-1, 16-2</u> |
| 2.0202.2 | Vented Subspaces – Ground Cover | <u>16-1, 16-2</u> |
| 2.0202.3 | Pier and Skirting Foundations – Ground Cover | <u>16-1, 16-2</u> |
| 3.0101.1 | Air Sealing Holes | <u>2-1, 2-2, 2-3, 2-4, 2-6, 2-7, 8-1, 8-2, 13-1, 13-2, 13-3</u> |
| 3.0102.1 | Sealing Non-Insulation Contact Recessed Light | <u>3-2</u> |
| 3.0102.2 | Sealing High-Temperature Devices | <u>3-1</u> |
| 3.0102.4 | Sealing Firewalls | <u>2-4, 13-3</u> |
| 3.0102.5 | MH Belly Repair – Soft Bottom Patching | <u>(15-1)</u> |
| 3.0102.6 | MH Belly Repair – Soft Bottom Replacement | <u>(15-1)</u> |
| 3.0102.7 | MH Belly Repair – Rigid Bottom Patching | <u>(15-1)</u> |
| 3.0102.9 | Sealing Dropped Soffits/Bulkheads | <u>2-2</u> |
| 3.0102.11 | Sealing Roof/Wall Connections | <u>2-1, 8-1</u> |
| 3.0103.1 | Access Doors and Hatches | <u>5-1, 5-2</u> |
| 3.0104.1 | Closed Crawlspace Air Sealing | <u>12-1, 13-1, 13-2, (16-1, 16-2)</u> |
| 3.0201.1 | Window Air Sealing | <u>22-1</u> |
| 3.0201.4 | Glass Replacement | <u>22-1</u> |
| 3.0201.9 | Window Replacement | <u>21-1</u> |
| 3.0202.1 | Door Air Sealing | <u>11-1, 11-2</u> |
| 3.0202.2 | Door Replacement | <u>21-2</u> |
| 4.0103.1 | Accessible Attic – Batt Installation | <u>4-1</u> |
| 4.0103.2 | Accessible Attic – Loose Fill Installation | <u>4-1, 6-1</u> |
| 4.0103.3 | Accessible Attic – Batt Insulation over Existing Insulation | <u>4-1</u> |
| 4.0103.4 | Accessible Attic – Loose Fill over Existing Insulation | <u>4-1, 6-1</u> |
| 4.0103.5 | Accessible Attic – SPF on Attic Floor | <u>4-1</u> |
| 4.0103.6 | Accessible Attic – Dense Pack Insulation | <u>4-1, 6-1, 7-1</u> |
| 4.0103.8 | Loose Fill to Capacity | <u>4-1</u> |
| 4.0103.10 | MH – Blown Insulation via Roof Side Lift Access | <u>7-1, 7-3</u> |
| 4.0103.11 | MH – Blown Insulation via Roof Top Access | <u>7-1, 7-4, 7-6</u> |
| 4.0103.12 | MH – Blown Insulation via Interior Access through the Ceiling | <u>7-1, 7-5</u> |
| 4.0104.1 | Knee Wall – Dense Packing | <u>6-3, 8-5</u> |
| 4.0104.2 | Knee Wall – Batt Insulation | <u>6-3, 8-3</u> |
| 4.0104.3 | Knee Wall – Existing Batt Insulation Repair | <u>6-3, 8-3</u> |
| 4.0104.4 | Knee Wall – Rigid Insulation | <u>6-3</u> |
| 4.0104.5 | Knee Wall – SPF with No Existing Insulation | <u>8-4</u> |
| 4.0104.6 | Knee Wall – SPF with Existing Insulation | <u>8-4</u> |
| 4.0188.2 | Unconditioned Attic Ventilation | <u>25-1</u> |
| 4.0201.2 | Batt Insulation (Accessible Walls) | <u>6-3</u> |
| 4.0201.3 | Dense Pack Insulation (Accessible Walls) | <u>6-3</u> |
| 4.0202.1 | Dense Pack Insulation (Enclosed Walls) | <u>6-3, 9-1, 9-2</u> |

| 2020 SWS | Detail Title | Job Aids |
|-----------------|---|-------------------------------|
| 4.0301.1 | Batt Insulation in Joisted Cavities (Accessible Floors) | <u>14-1</u> |
| 4.0301.2 | Loose Fill with Netting/Fabric in Joisted Cavities | <u>14-2</u> |
| 4.0301.3 | Loose Fill in Joisted Cavities with Rigid Barrier | <u>14-2</u> |
| 4.0301.4 | Dense Pack in Joisted Cavities with Rigid Barrier | <u>14-2</u> |
| 4.0301.6 | Cantilever Floor Joisted Cavities Batt Insulation | <u>14-1</u> |
| 4.0302.1 | Batt Insulation with Rigid Barrier (Exposed Floors) | <u>14-1, 15-1</u> |
| 4.0302.2 | Loose Fill with Rigid Barrier | <u>14-2</u> |
| 4.0302.3 | Dense Pack with Rigid Barrier | <u>14-2</u> |
| 4.0302.9 | MH – Blown Belly Insulation | <u>15-1</u> |
| 4.0401.1 | SPF Insulation (Rim/Band Joist) | <u>12-2</u> |
| 4.0401.2 | Batt Insulation | <u>12-2</u> |
| 4.0401.3 | Rigid Insulation | <u>12-2</u> |
| 4.0402.1 | Closed Crawlspc – Non-Foam Insulation (Walls) | <u>(12-4)</u> |
| 4.0402.2 | Closed Crawlspc – Rigid Foam Insulation | <u>12-4</u> |
| 4.0402.3 | Closed Crawlspc – SPF Insulation | <u>12-4</u> |
| 4.0402.4 | Basements – without Groundwater Leakage | <u>12-3</u> |
| 4.0402.5 | Basements – with Groundwater Leakage | <u>12-3</u> |
| 5.0105.1 | Mechanical Fastening (Forced Air Duct Repair) | <u>(19-1)</u> |
| 5.0105.2 | Duct Support | <u>20-2, (19-1)</u> |
| 5.0105.3 | Crossover Duct Repair or Replacement | <u>(19-1)</u> |
| 5.0106.1 | General Duct Sealing (Forced Air) | <u>19-1</u> |
| 5.0107.1 | General Duct Insulation | <u>20-1, 20-2, 20-3, 20-4</u> |
| 5.0107.2 | Duct Insulation – SPF | <u>20-1</u> |
| 6.0101.1 | Ventilation Ducts | <u>18-2</u> |
| 6.0101.2 | Exhaust Terminations | <u>18-2, 19-1, 25-1</u> |
| 6.0101.3 | Exterior Intakes | <u>19-1</u> |
| 6.0201.1 | Surface Mounted (Local Ventilation Exhaust Systems) | <u>2-6, 18-2, 25-1</u> |
| 6.0201.2 | Kitchen Range Hoods | <u>2-6, 18-2, 25-1</u> |
| 6.0202.1 | Clothes Dryer (Appliance Exhaust) | <u>17-1, (20-1)</u> |
| 7.0201.1 | Low-Flow Devices | <u>24-1, 24-2</u> |
| 7.0301.1 | Pipe Insulation | <u>23-3</u> |
| 7.0301.2 | Tank Insulation | <u>23-1, 23-2</u> |
| Lead RRP | EPA's Lead Renovation, Repair, and Painting Rule | <u>1-1, 1-2</u> |